

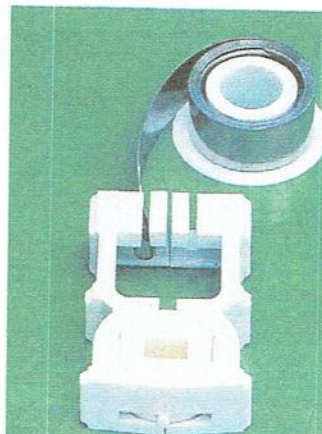
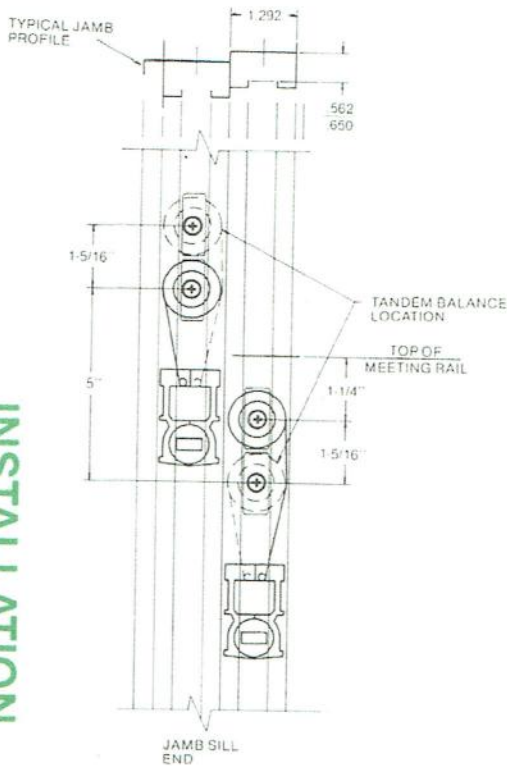


HARDWARE CATALOG

PRODUCT IN THIS CATALOG DOES NOT REPRESENT ALL OUR AVAILABLE HARDWARE. IF YOU DO NOT SEE WHAT YOU NEED, GIVE US A CALL 717-741-4844

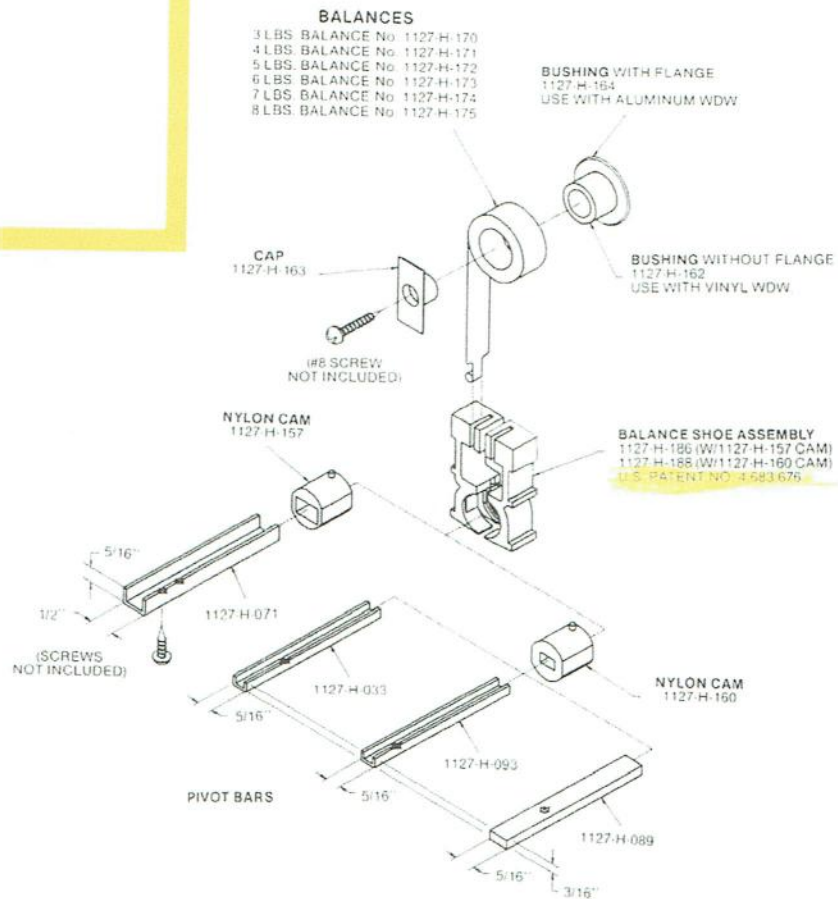
CONSTANT FORCE BALANCERS

INSTALLATION



Our special formulated stainless steel balance eliminates hardware replacement. Its unique heat treatment makes it virtually indestructible.

COMPONENTS

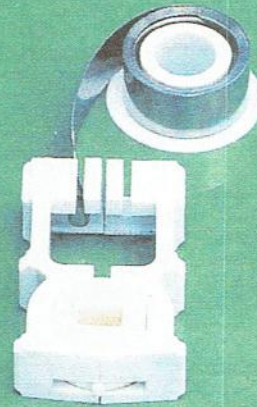
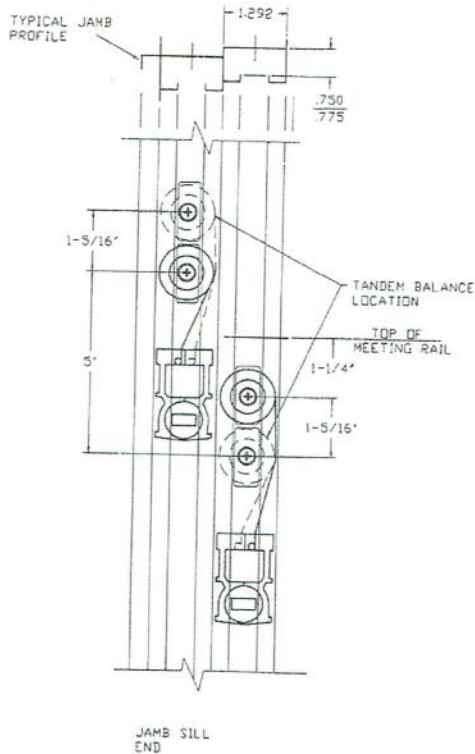


Product
Design &
Development
Inc.

2603 KEYWAY DRIVE • YORK, PENNSYLVANIA 17402
PHONE # 717-741-4844 • FAX # 717-741-4625

CONSTANT FORCE BALANCERS

INSTALLATION



Our special formulated stainless steel balance eliminates hardware replacement. Its unique heat treatment makes it virtually indestructible.

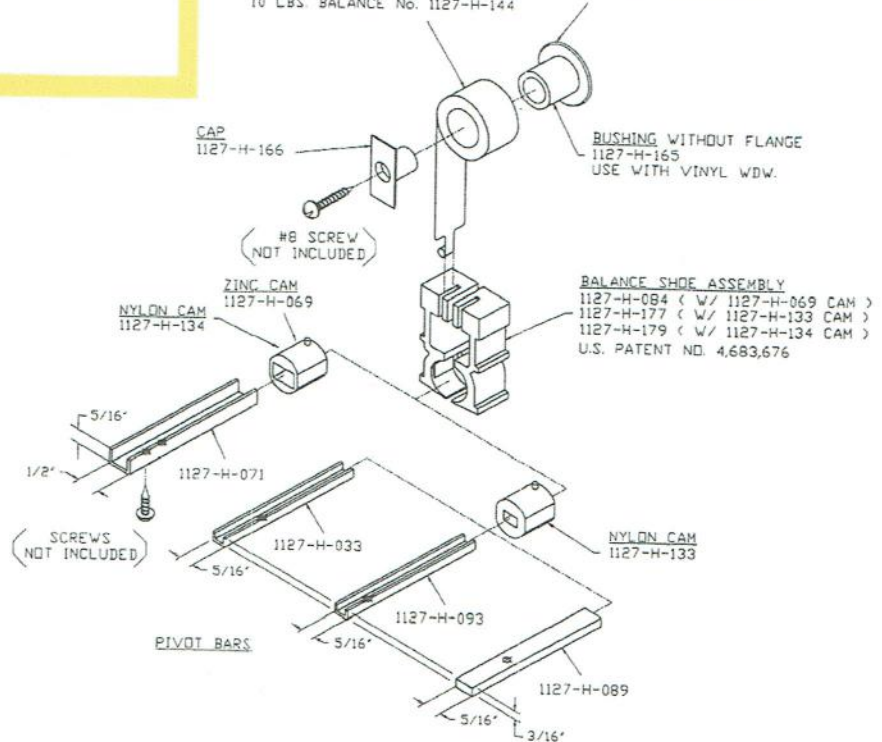
3/4" BALANCERS

BALANCES

- 3 LBS. BALANCE No. 1127-H-099
- 4 LBS. BALANCE No. 1127-H-123
- 5 LBS. BALANCE No. 1127-H-126
- 6 LBS. BALANCE No. 1127-H-127
- 7 LBS. BALANCE No. 1127-H-128
- 8 LBS. BALANCE No. 1127-H-129
- 9 LBS. BALANCE No. 1127-H-143
- 10 LBS. BALANCE No. 1127-H-144

RUSHING WITH FLANGE
1127-H-167
USE WITH ALUMINUM WDW.

COMPONENTS



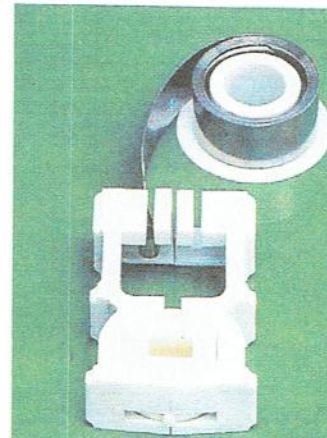
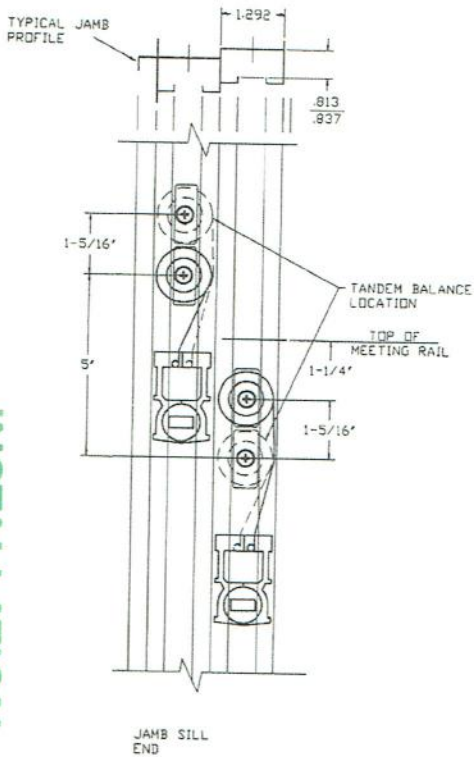
Product
Design &
Development
Inc.

2603 KEYWAY DRIVE • YORK, PENNSYLVANIA 17402
PHONE # 717-741-4844 • FAX # 717-741-4625

H-31

CONSTANT FORCE BALANCERS

INSTALLATION



Our special formulated stainless steel balance eliminates hardware replacement. Its unique heat treatment makes it virtually indestructible.

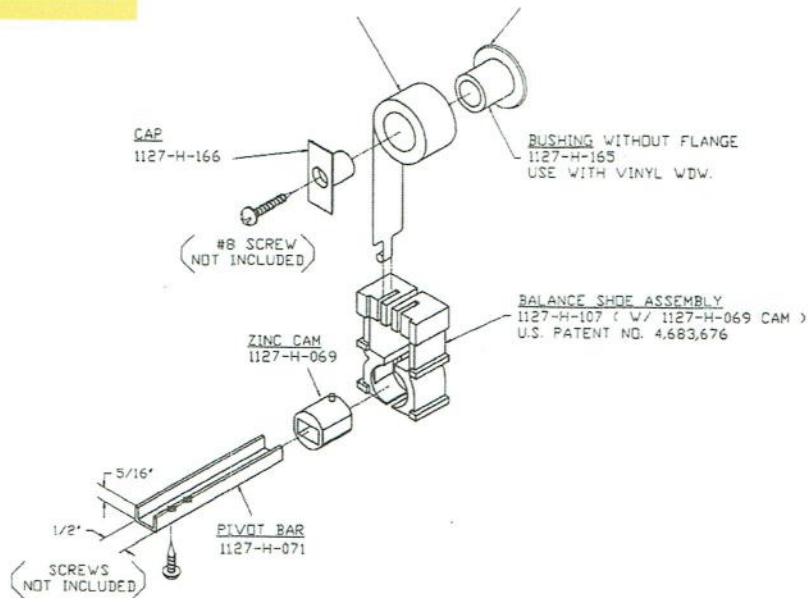
13/16" BALANCERS

BALANCES

3 LBS. BALANCE	No. 1127-H-099
4 LBS. BALANCE	No. 1127-H-123
5 LBS. BALANCE	No. 1127-H-126
6 LBS. BALANCE	No. 1127-H-127
7 LBS. BALANCE	No. 1127-H-128
8 LBS. BALANCE	No. 1127-H-129
9 LBS. BALANCE	No. 1127-H-143
10 LBS. BALANCE	No. 1127-H-144

RUSHING WITH FLANGE
1127-H-167
USE WITH ALUMINUM WDW.

COMPONENTS



Product
Design &
Development
Inc.

2603 KEYWAY DRIVE • YORK, PENNSYLVANIA 17402
PHONE # 717-741-4844 • FAX # 717-741-4625

CONSTANT FORCE BALANCE SYSTEM I

BALANCES

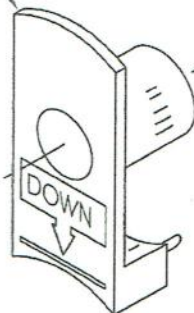
- 3 LBS. BALANCE No. H-170
 - 4 LBS. BALANCE No. H-171
 - 5 LBS. BALANCE No. H-172
 - 6 LBS. BALANCE No. H-173
 - 7 LBS. BALANCE No. H-174
 - 8 LBS. BALANCE No. H-175
- 500 PER CARTON

1/2" COMPONENTS

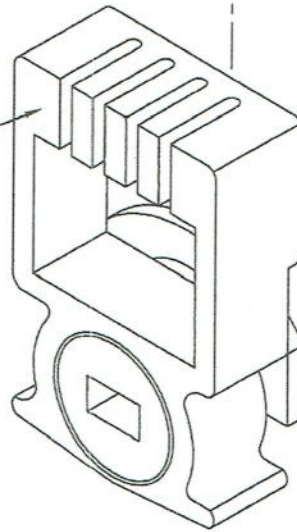
CAP
H-182
NYLON
3000 PER CARTON



#8 SCREW
NOT INCLUDED



BALANCE SHOE
H-255
NYLON
1 000 PER CARTON



SUPPORT BARREL
H-162
NYLON
4000 PER CARTON

BUSHING
H-181
NYLON
4000 PER CARTON

ALSO AVAILABLE
BALANCE SHOES
H-656 1/2" (Take-out)
H-348 5/8"
H-350 9/16"
USING THE BALANCES
LISTED ABOVE

SEE PAGES 25-26 FOR PIVOT BAR OPTIONS



2603 KEYWAY DRIVE YORK, PENNSYLVANIA 17402 USA
PHONE # 717-741-4844 FAX # 717-741-4625

CONSTANT FORCE BALANCE SYSTEM I

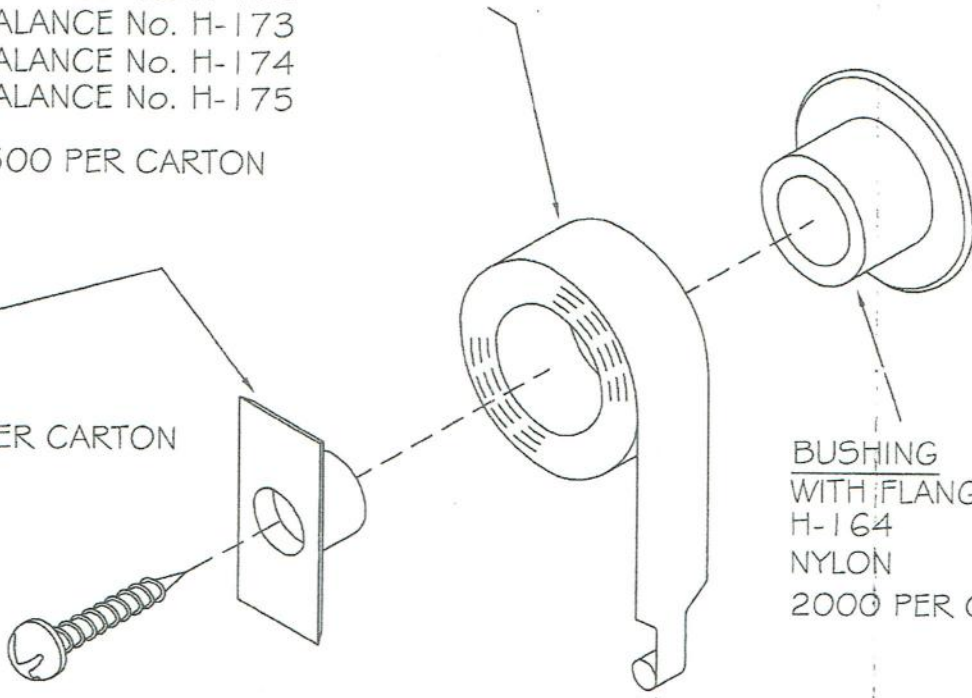
BALANCES

- 3 LBS. BALANCE No. H-170
- 4 LBS. BALANCE No. H-171
- 5 LBS. BALANCE No. H-172
- 6 LBS. BALANCE No. H-173
- 7 LBS. BALANCE No. H-174
- 8 LBS. BALANCE No. H-175

500 PER CARTON

1/2" COMPONENTS

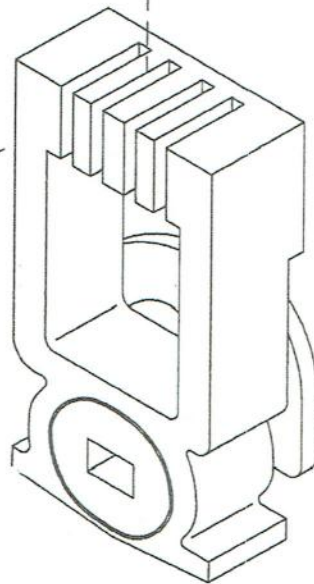
CAP
H-163
NYLON
4000 PER CARTON



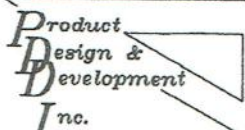
BUSHING WITH FLANGE
H-164
NYLON
2000 PER CARTON

#8 SCREW
NOT INCLUDED

BALANCE SHOE
H-255
NYLON
1000 PER CARTON



SEE PAGES 25-26 FOR PIVOT BAR OPTIONS



2603 KEYWAY DRIVE YORK, PENNSYLVANIA 17402 USA
PHONE # 717-741-4844 FAX # 717-741-4625

CONSTANT FORCE BALANCE SYSTEM I

BALANCES

- 3 LBS. BALANCE No. H-099
- 4 LBS. BALANCE No. H-123
- 5 LBS. BALANCE No. H-126
- 6 LBS. BALANCE No. H-127
- 7 LBS. BALANCE No. H-128
- 8 LBS. BALANCE No. H-129
- 9 LBS. BALANCE No. H-143
- 10 LBS. BALANCE No. H-144

3/4" COMPONENTS

500 PER CARTON

CAP
H-183
NYLON
3000 PER CARTON



#8 SCREW
NOT INCLUDED

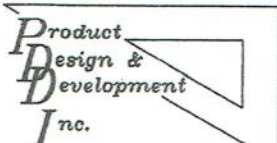
SUPPORT BARREL
H-165
NYLON
4000 PER CARTON

BUSHING
H-181
NYLON
4000 PER CARTON

BALANCE SHOE
H-256
NYLON
1000 PER CARTON

BALANCE SHOE
H-279
NYLON
1000 PER CARTON

SEE PAGES 25-26 FOR PIVOT BAR OPTIONS



2603 KEYWAY DRIVE YORK, PENNSYLVANIA 17402 USA
PHONE # 717-741-4844 FAX # 717-741-4625

CONSTANT FORCE BALANCE SYSTEM I

BALANCES

- 4 LBS. BALANCE No. H-123
 - 5 LBS. BALANCE No. H-126
 - 6 LBS. BALANCE No. H-127
 - 7 LBS. BALANCE No. H-128
 - 8 LBS. BALANCE No. H-129
 - 9 LBS. BALANCE No. H-143
 - 10 LBS. BALANCE No. H-144
- 500 PER CARTON

3/4" COMPONENTS

CAP
H-166
NYLON
3000 PER CARTON

#8 SCREW
NOT INCLUDED

BUSHING
WITH FLANGE
H-167
NYLON
2000 PER
CARTON

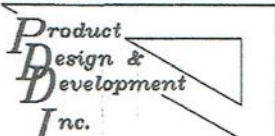
BALANCE SHOE
H-256
NYLON

BALANCE SHOE
H-279
NYLON

1000 PER CARTON

BALANCE SHOE
H-142Z
WITH ZINC CAM

SEE PAGES 25-26 FOR PIVOT BAR OPTIONS



2603 KEYWAY DRIVE YORK, PENNSYLVANIA 17402 USA
PHONE # 717-741-4844 FAX # 717-741-4625

CONSTANT FORCE BALANCE SYSTEM III

BALANCES

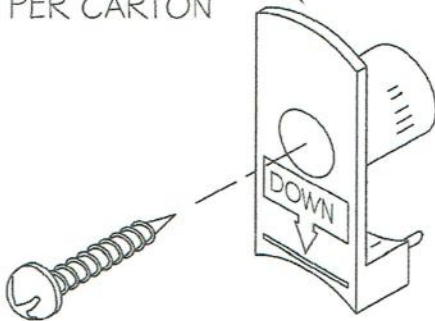
- 3 LBS. BALANCE No. H-573
- 4 LBS. BALANCE No. H-574
- 5 LBS. BALANCE No. H-575
- 6 LBS. BALANCE No. H-576
- 7 LBS. BALANCE No. H-577
- 8 LBS. BALANCE No. H-578

500 PER CARTON

1/2" COMPONENTS

SUPPORT CAP

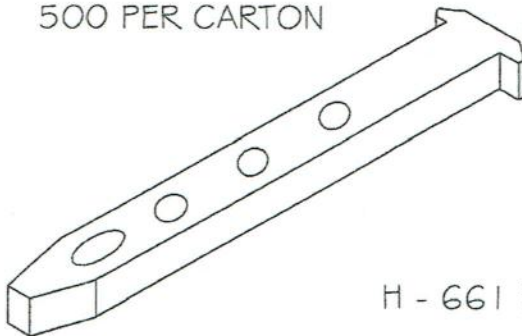
H-182
NYLON
3000 PER CARTON



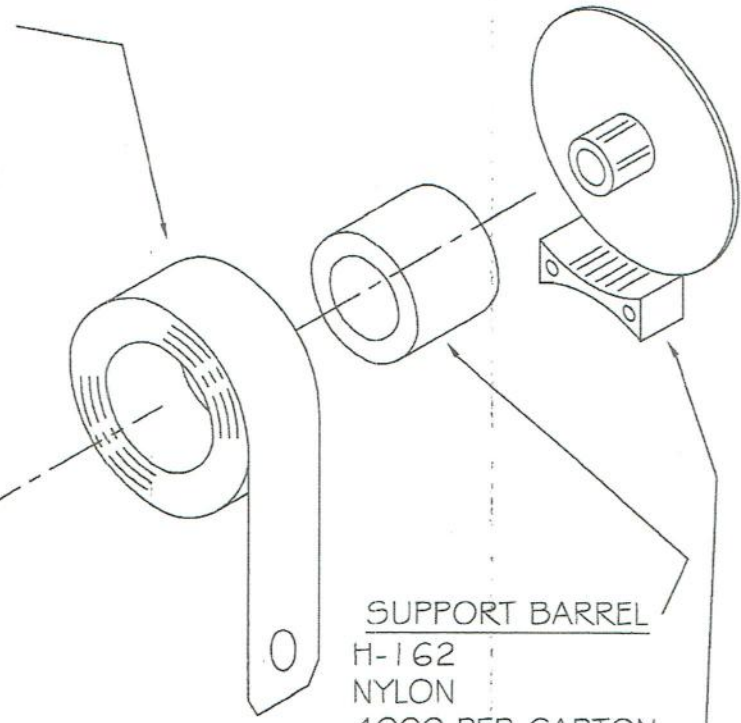
#8 SCREWS
NOT INCLUDED

BALANCE SHOE 1/2"

H-649
NYLON
500 PER CARTON



H - 661 PIVOT BAR

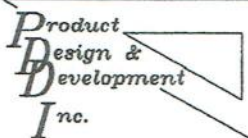


SUPPORT BARREL

H-162
NYLON
4000 PER CARTON

SUPPORT FLANGE

H-181
NYLON
4000 PER CARTON



2603 KEYWAY DRIVE YORK, PENNSYLVANIA 17402 USA
PHONE # 717-741-4844 FAX # 717-741-4625

11-102 1127051

CONSTANT FORCE BALANCE SYSTEM III

BALANCES

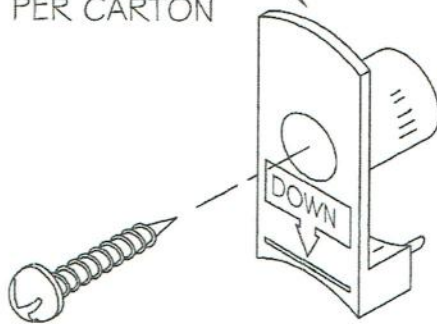
- 3 LBS. BALANCE No. H-573
- 4 LBS. BALANCE No. H-574
- 5 LBS. BALANCE No. H-575
- 6 LBS. BALANCE No. H-576
- 7 LBS. BALANCE No. H-577
- 8 LBS. BALANCE No. H-578

500 PER CARTON

1/2" COMPONENTS

SUPPORT CAP

H-182
NYLON
3000 PER CARTON

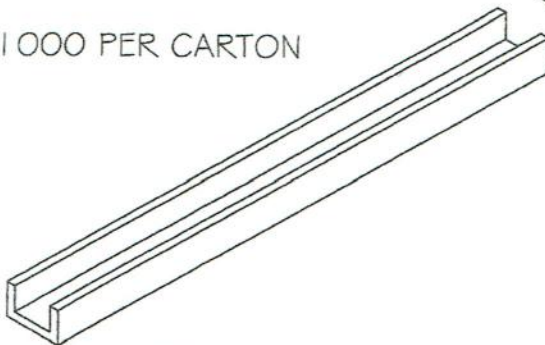


#8 SCREWS
NOT INCLUDED

BALANCE SHOE 1/2"

H-566
NYLON

1000 PER CARTON



SUPPORT BARREL

H-162
NYLON
4000 PER CARTON

SUPPORT FLANGE

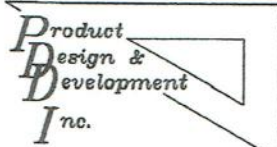
H-181
NYLON
4000 PER CARTON

ALSO AVAILABLE BALANCE SHOES

- H-580 9/16"
- H-639 5/8"
- H-592 5/8"

USING THE BALANCES
LISTED ABOVE

SEE PAGES 25-26 FOR PIVOT BAR OPTIONS



2603 KEYWAY DRIVE YORK, PENNSYLVANIA 17402 USA
PHONE # 717-741-4844 FAX # 717-741-4625

11-1-02 1127L05L

CONSTANT FORCE BALANCE SYSTEM III

BALANCES

- 3 LBS. BALANCE No. H-573
- 4 LBS. BALANCE No. H-574
- 5 LBS. BALANCE No. H-575
- 6 LBS. BALANCE No. H-576
- 7 LBS. BALANCE No. H-577
- 8 LBS. BALANCE No. H-578

500 PER CARTON

1/2" COMPONENTS TANDUM

SUPPORT CAP

H-182
NYLON
3000 PER CARTON

#8 SCREWS
NOT INCLUDED

BALANCE SHOE 1/2"

H-643
NYLON
500 PER CARTON

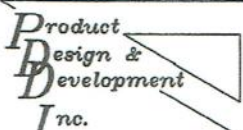
SUPPORT BARREL

H-162
NYLON
4000 PER CARTON

SUPPORT FLANGE

H-181
NYLON
4000 PER CARTON

H - 033-2 PIVOT BAR



2603 KEYWAY DRIVE YORK, PENNSYLVANIA 17402 USA
PHONE # 717-741-4844 FAX # 717-741-4625

BALANCES

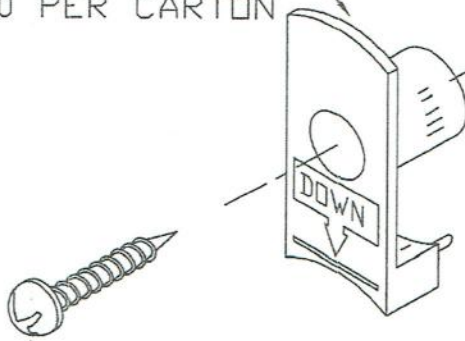
- 3 LBS. BALANCE No. H-583
- 4 LBS. BALANCE No. H-584
- 5 LBS. BALANCE No. H-585
- 6 LBS. BALANCE No. H-586
- 7 LBS. BALANCE No. H-587
- 8 LBS. BALANCE No. H-588
- 9 LBS. BALANCE No. H-589
- 10 LBS. BALANCE No. H-590

500 PER CARTON

3/4" COMPONENTS

SUPPORT CAP

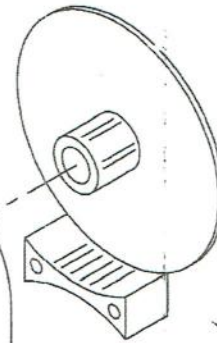
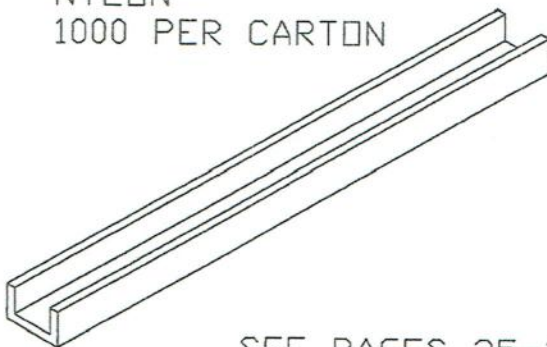
H-183
NYLON
3000 PER CARTON



#8 SCREWS
NOT INCLUDED

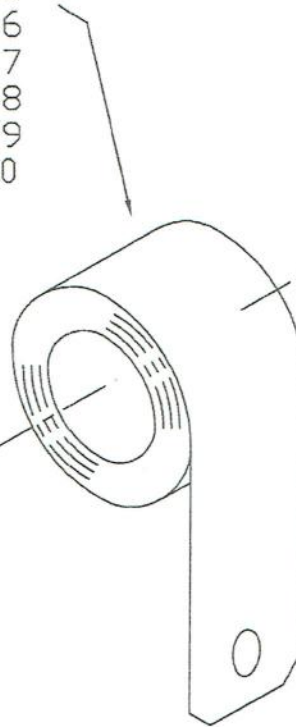
BALANCE SHOE 3/4"

H-570
NYLON
1000 PER CARTON



SUPPORT FLANGE

H-181
NYLON
4000 PER CARTON



SEE PAGES 25-26 FOR PIVOT BAR OPTIONS

CONSTANT FORCE BALANCE SYSTEM III

BALANCES

- 3 LBS. BALANCE No. H-583
- 4 LBS. BALANCE No. H-584
- 5 LBS. BALANCE No. H-585
- 6 LBS. BALANCE No. H-586
- 7 LBS. BALANCE No. H-587
- 8 LBS. BALANCE No. H-588
- 9 LBS. BALANCE No. H-589
- 10 LBS. BALANCE No. H-590

3/4" COMPONENTS

400 PER CARTON

CAP
H-183
NYLON
3000 PER CARTON

#8 SCREW
NOT INCLUDED

SUPPORT BARREL
H-165
NYLON
4000 PER CARTON

BUSHING
H-181
NYLON
4000 PER CARTON

BALANCE SHOE
H-570
NYLON
1000 PER CARTON

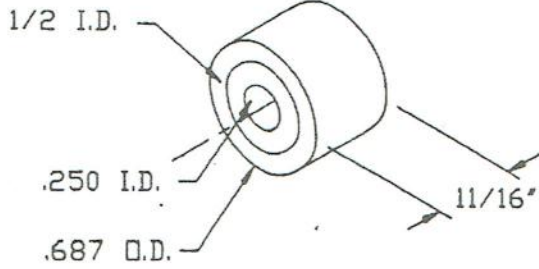
SEE PAGES 25-26 FOR PIVOT BAR OPTIONS

*Product
Design &
Development
Inc.*

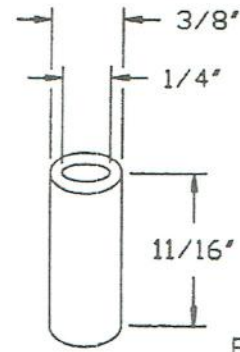
2603 KEYWAY DRIVE YORK, PENNSYLVANIA 17402 USA
PHONE # 717-741-4844 FAX # 717-741-4625

HARDWARE

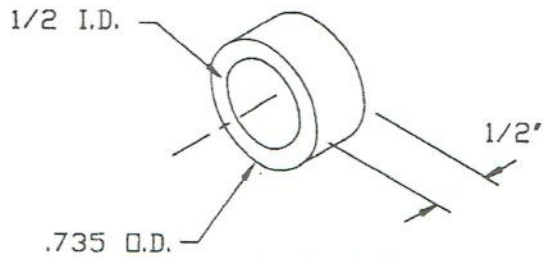
BUSHINGS



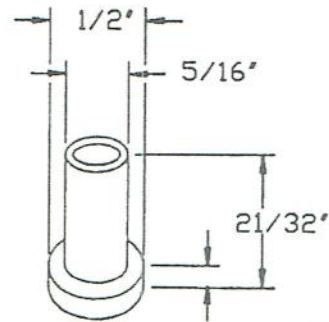
11/16" BUSHING
H-139
NYLON
3000 PER CARTON



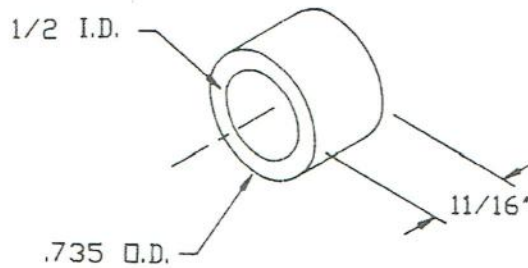
PLUNGER
H-295
NYLON
5000 PER CARTON



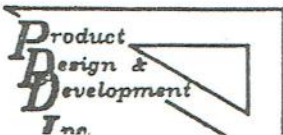
1/2" BUSHING
H-162
NYLON
4000 PER CARTON



1/8" HINGE BUSHING
H-317
NYLON
5000 PER CARTON

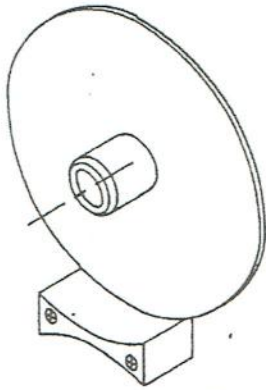


11/16" BUSHING
H-165
NYLON
3000 PER CARTON



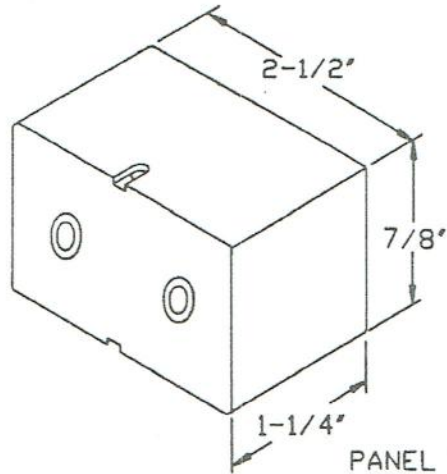
HARDWARE

BUSHINGS

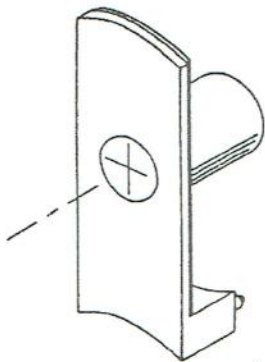


COLOR
WHITE

1/2" & 3/4" BUSHING
H-181
NYLON
4000 PER CARTON

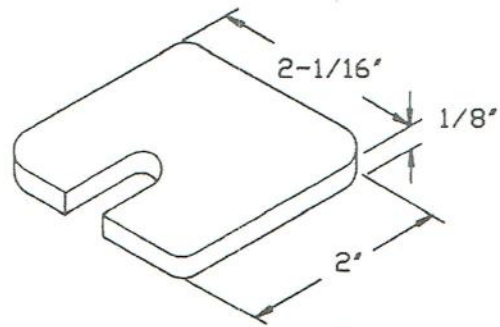


PANEL RETAINER
H-423
NYLON

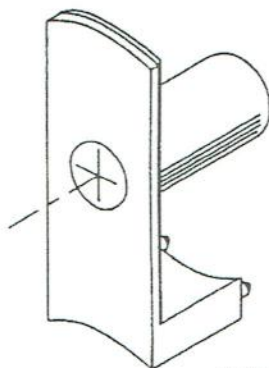


COLOR
WHITE

1/2" BUSHING
H-182
NYLON
3000 PER CARTON

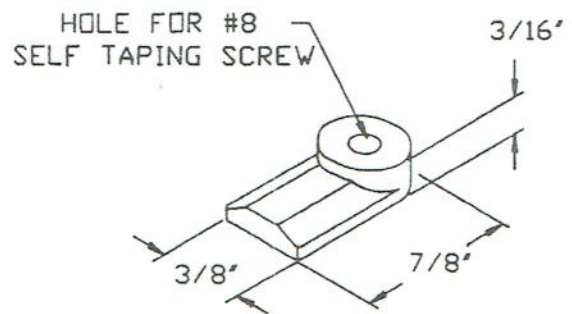


END CAP HEAD
H-429
NYLON

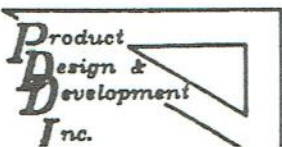


COLOR
WHITE

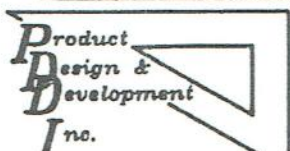
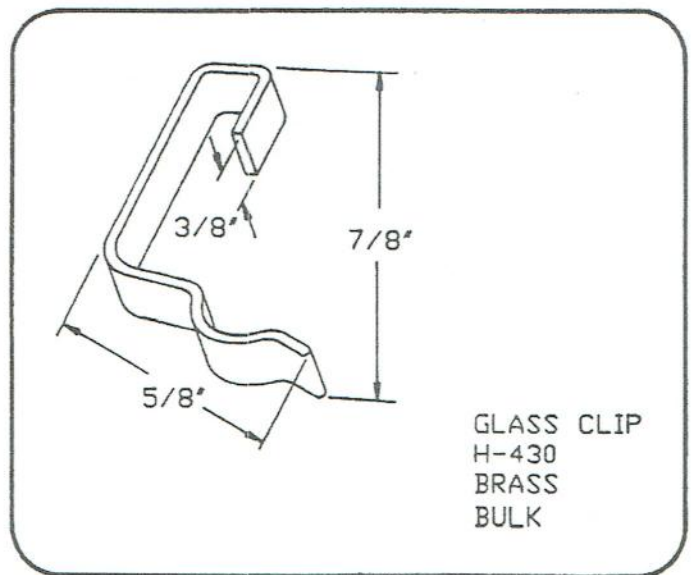
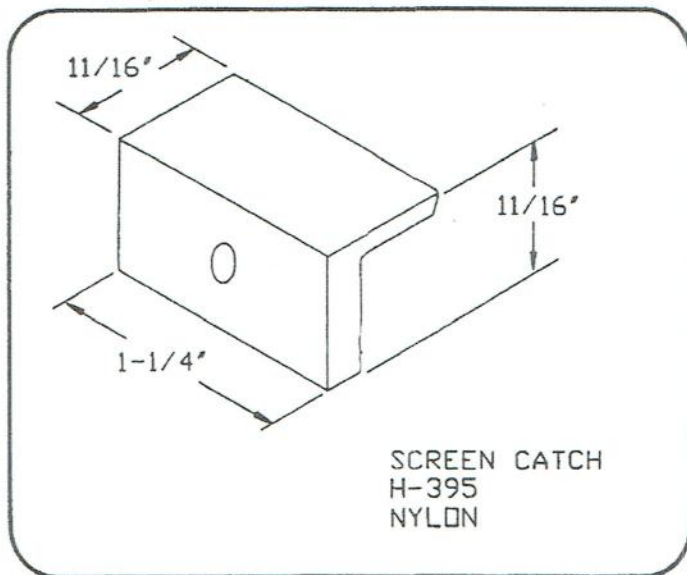
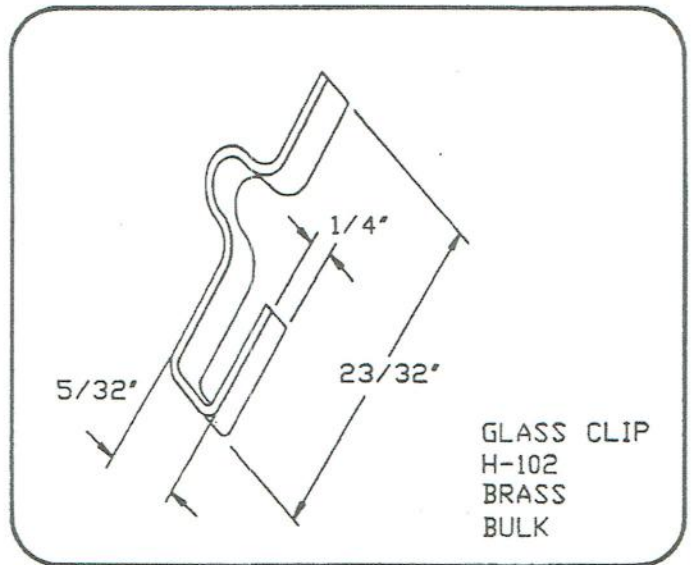
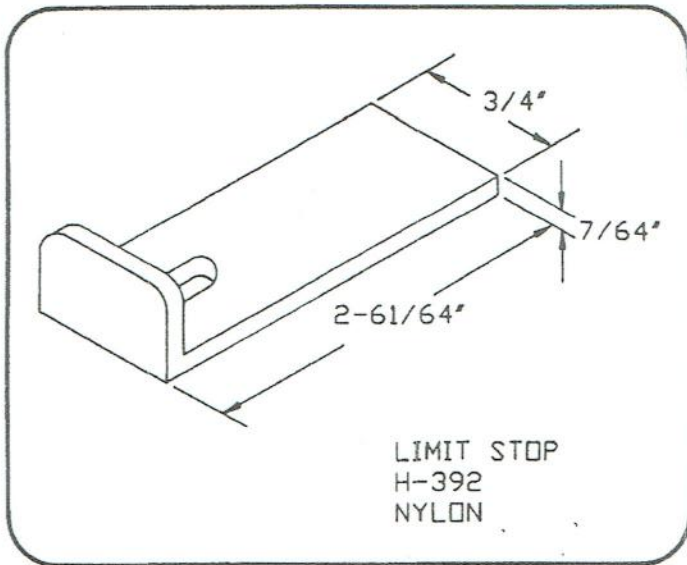
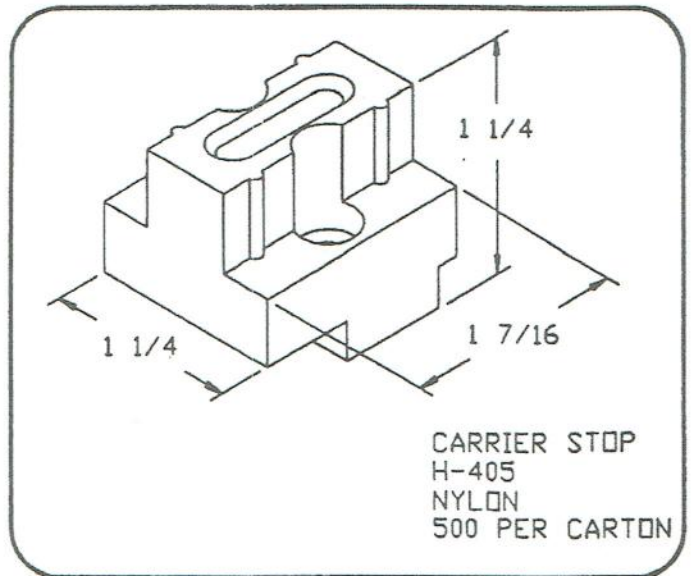
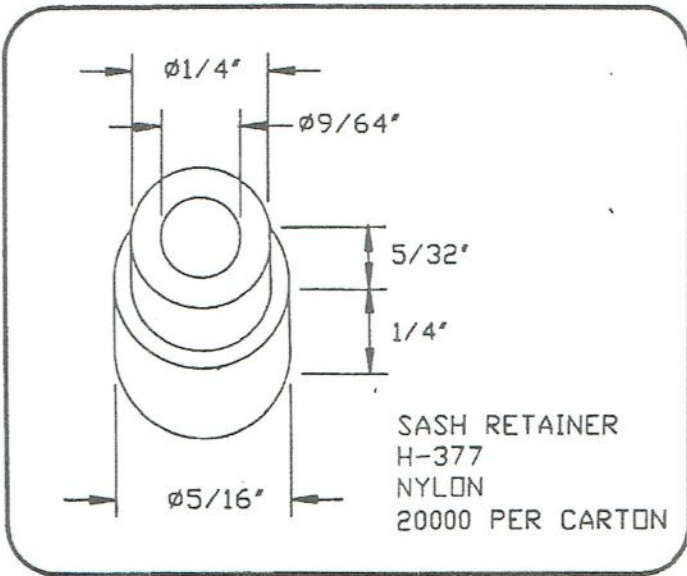
3/4" BUSHING
H-183
NYLON
2500 PER CARTON

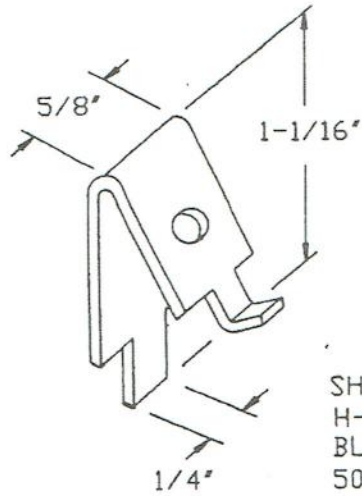


SASH LATCH
H-299
NYLON
1000 PER CARTON

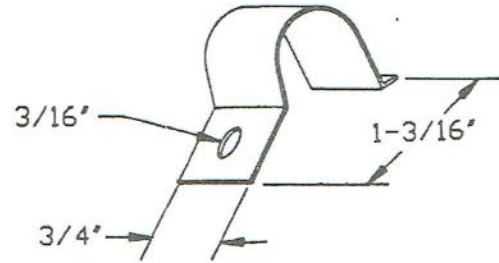


2603 KEYWAY DRIVE YORK, PENNSYLVANIA 17402 USA
PHONE # 717-741-4844 FAX # 717-741-4625

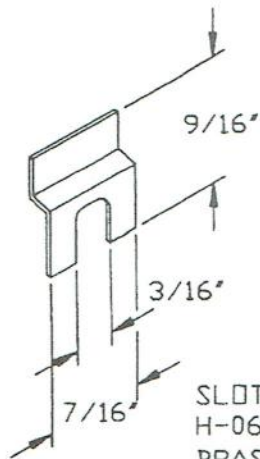




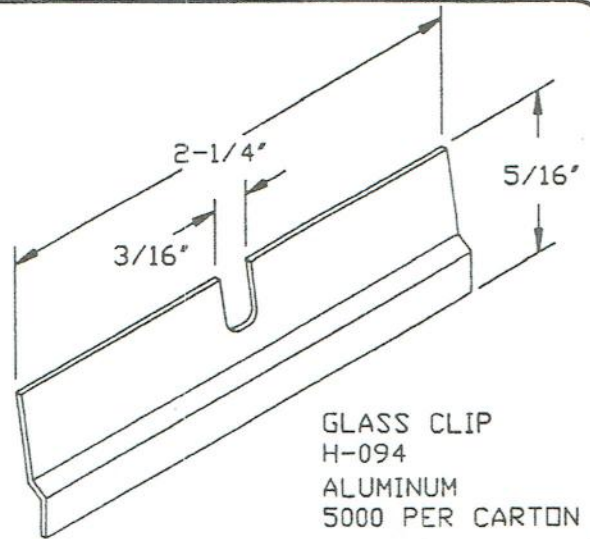
SHELF CLIP
H-005
BLACK OXIDE
5000 PER CARTON



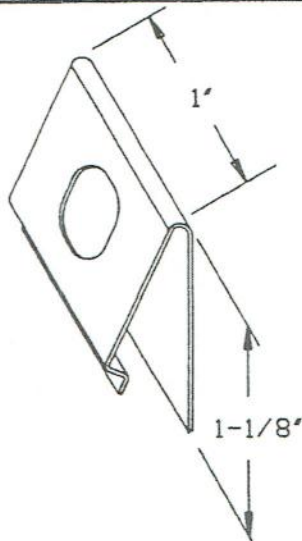
SCREEN RETAINER
H-073
STAINLESS STEEL
5000 PER CARTON



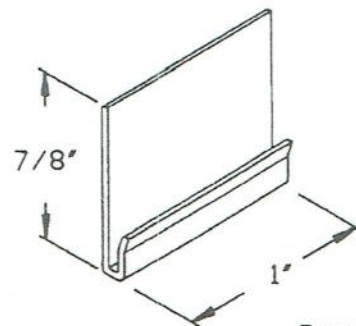
SLOTTED CLIP
H-064
BRASS
BULK



GLASS CLIP
H-094
ALUMINUM
5000 PER CARTON



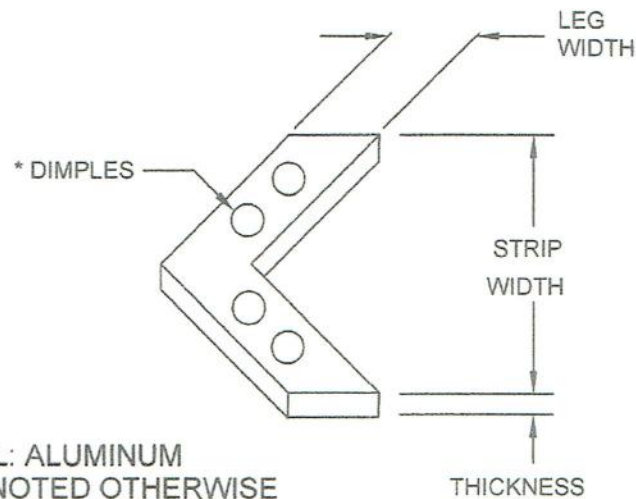
PANNING CLIP
H-072
STAINLESS STEEL
2500 PER CARTON



PANNING CLIP
H-307
STAINLESS STEEL
2500 PER CARTON

HARDWARE

CORNER KEYS

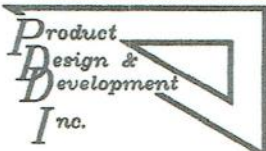


MATERIAL: ALUMINUM
UNLESS NOTED OTHERWISE

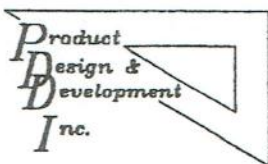
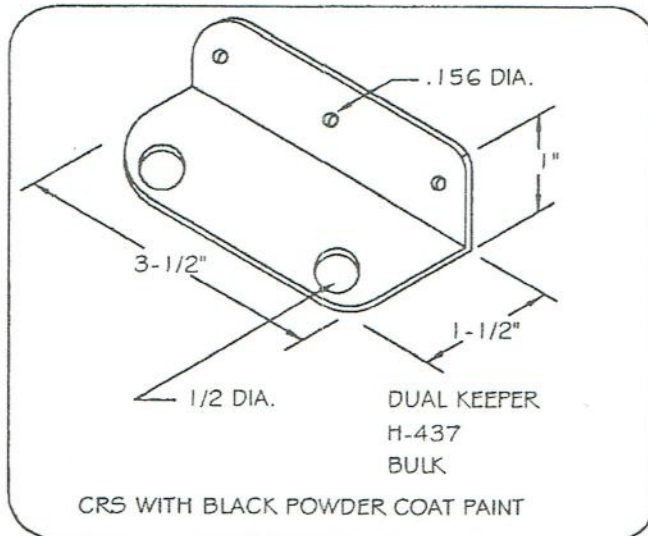
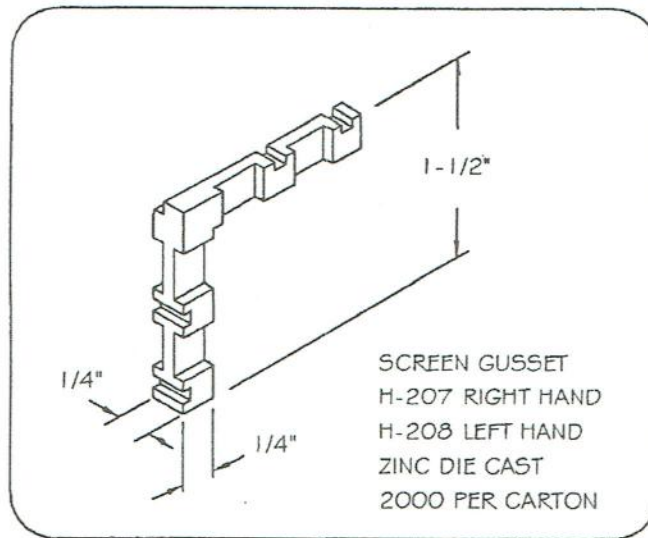
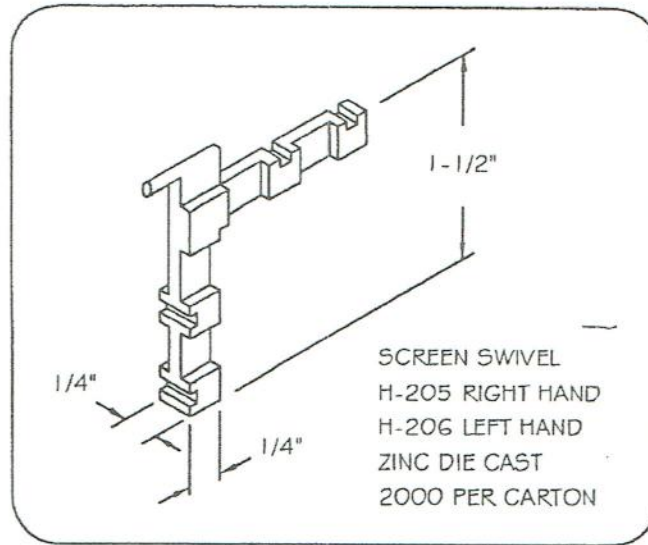
PART NO.	THICKNESS (IN.)	LEG WIDTH (IN.)	STRIP WIDTH (IN.)
H-475	.040	.605	2 1/2
H-433	.050	.485	2 1/2
H-467	.063	.750	2 1/2
H-016	.125	1.025	2 1/2
H-016-D	.125 (*.140 ± .010)	1.025	2 1/2
H-024	.125	.200	2 1/2
H-050	.125	.450	2 1/2
H-112	.125 (*.160)	.465	2 1/2
H-152	.125 (*.156 ± $\begin{smallmatrix} .000 \\ .020 \end{smallmatrix}$)	.625	2 1/2
H-468	.125	.620	2 1/2
H-520	.125	.635	2 1/2
H-534	.125 (*.156 ± .010)	.592	2 1/2
H-115	.175	.654	2 1/4
H-010	.187	.386	2 1/2
H-052	.187	.250	2 1/2
H-302	.250	.849	2 1/2
H-422**	.750	.500	2 3/4
H-451	.040	.500	2
H-452	.080	.520	2 1/2
H-601	.187	.455	2 1/2

* DENOTES THICKNESS WITH DIMPLES

** INDICATES MADE OF NYLON



2603 KEYWAY DRIVE YORK, PENNSYLVANIA 17402 USA
 PH: 717-741-4844 FAX: 717-741-4625 EMAIL: pddi@comcast.net
 www.pddi.us

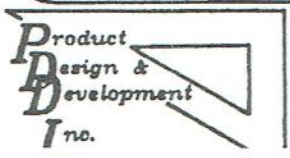
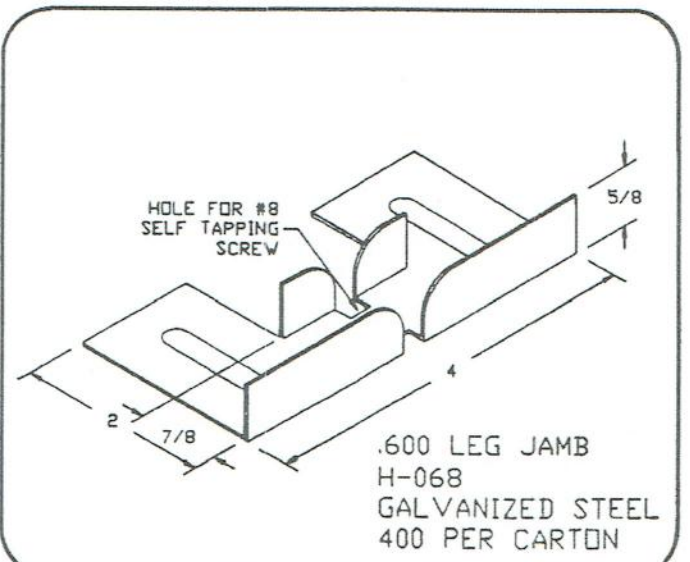
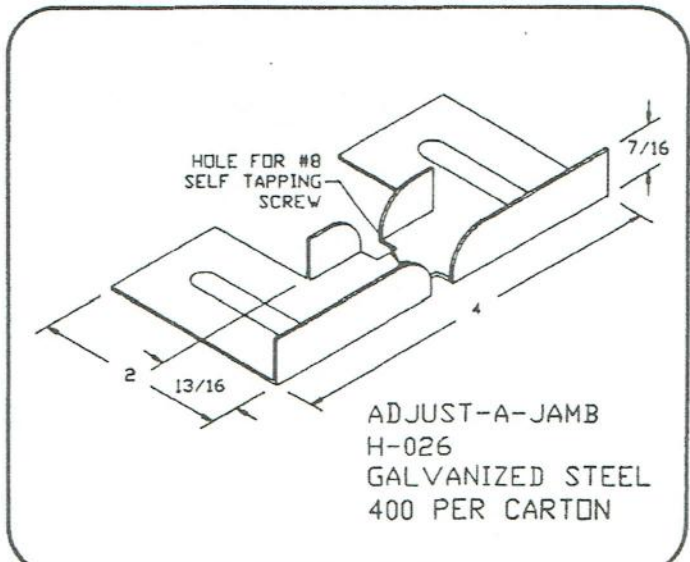
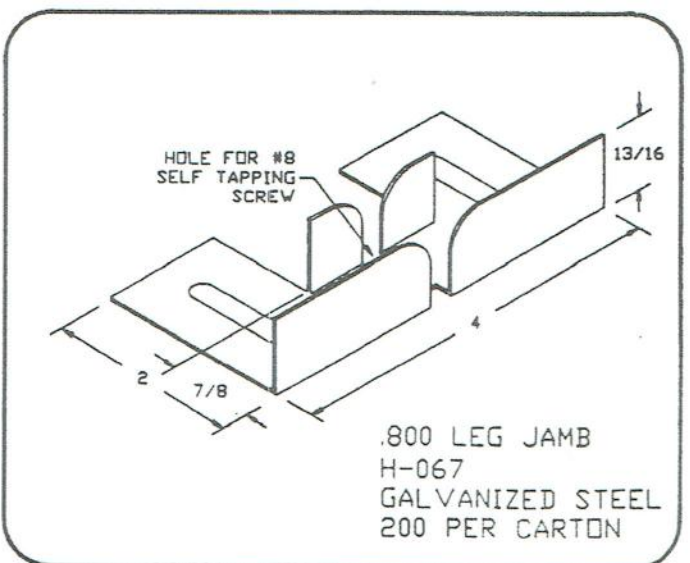
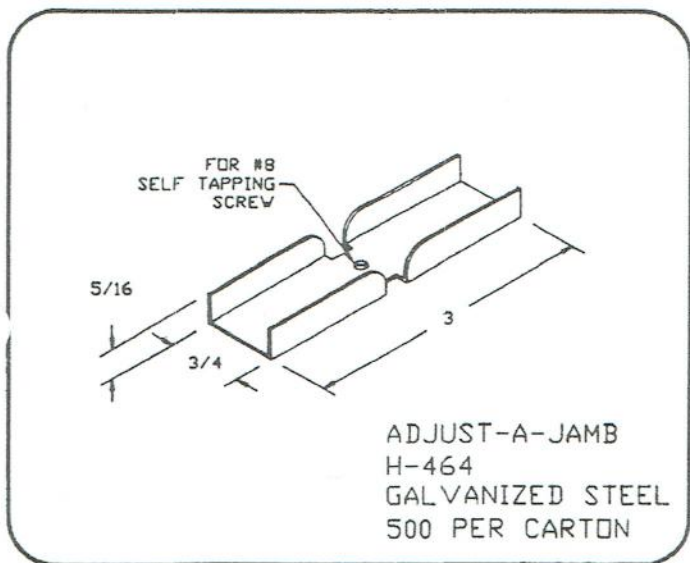
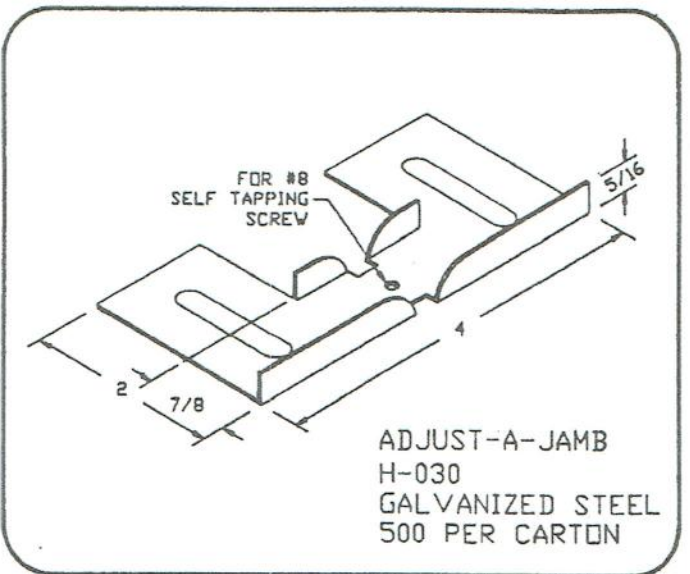
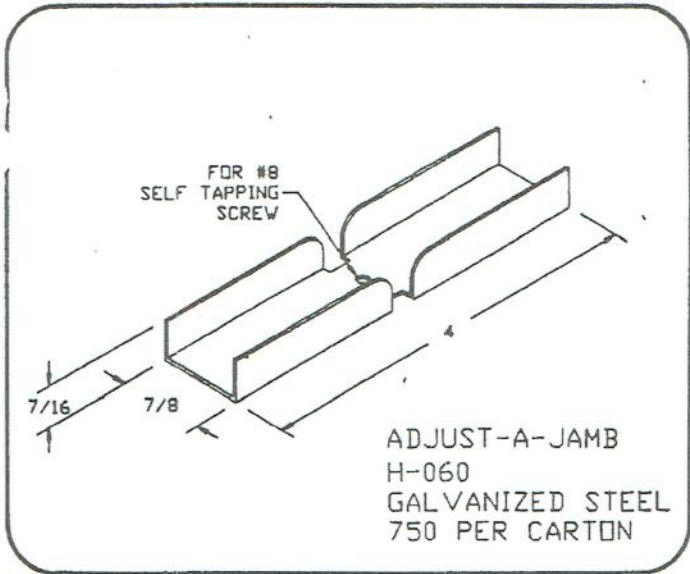


2603 KEYWAY DRIVE YORK, PENNSYLVANIA 17402 USA
 PHONE # 717-741-4844 FAX # 717-741-4625

HARDWARE

JAMB ADJUSTERS

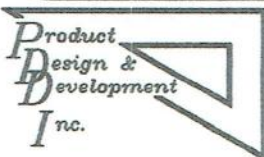
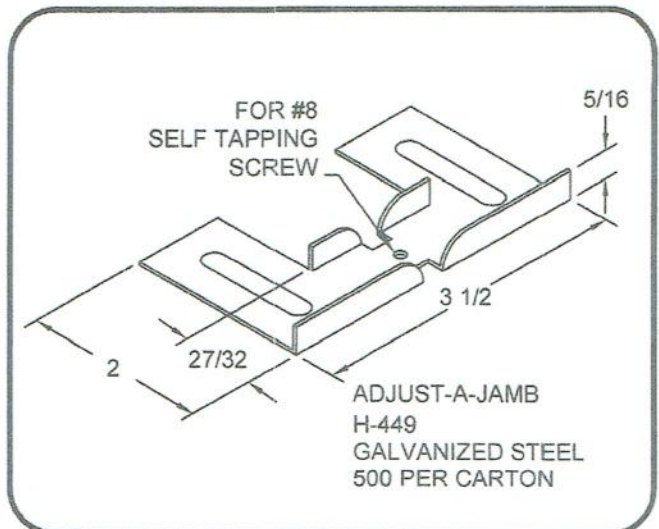
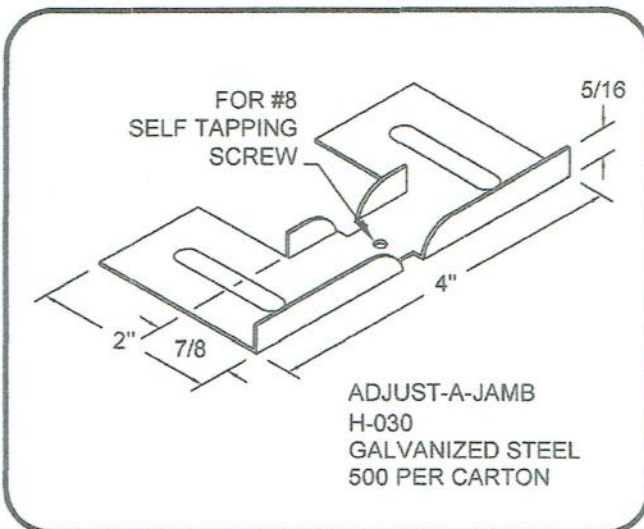
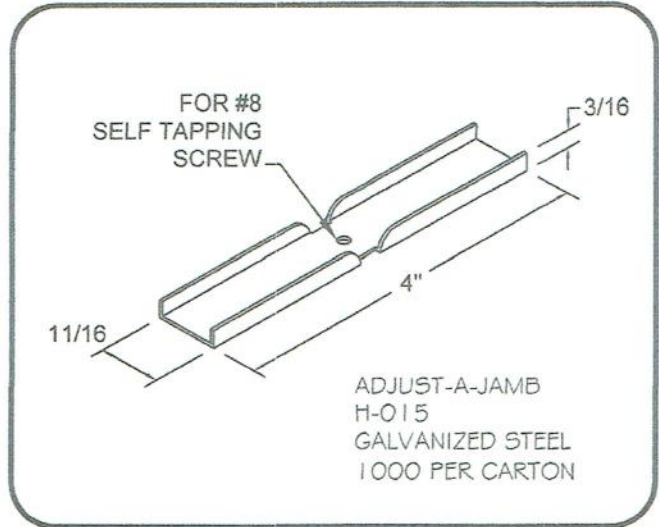
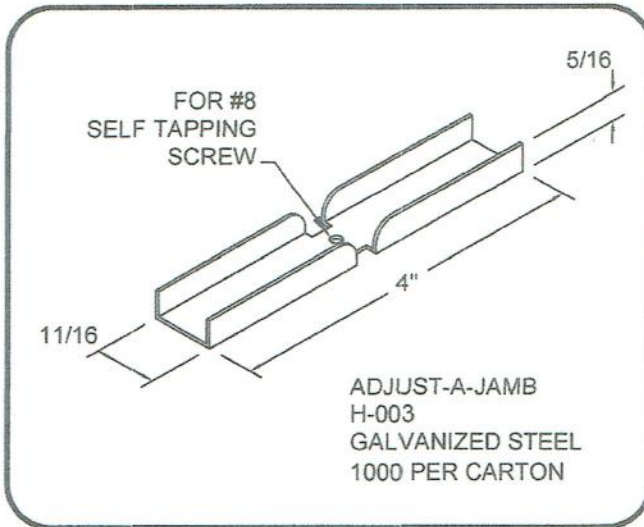
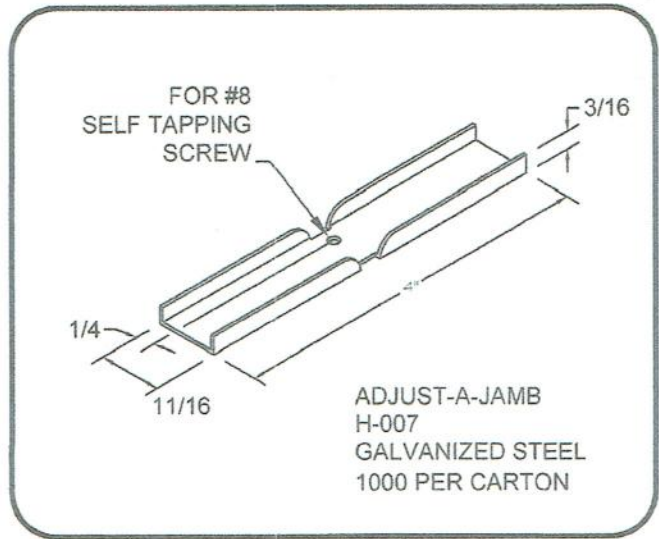
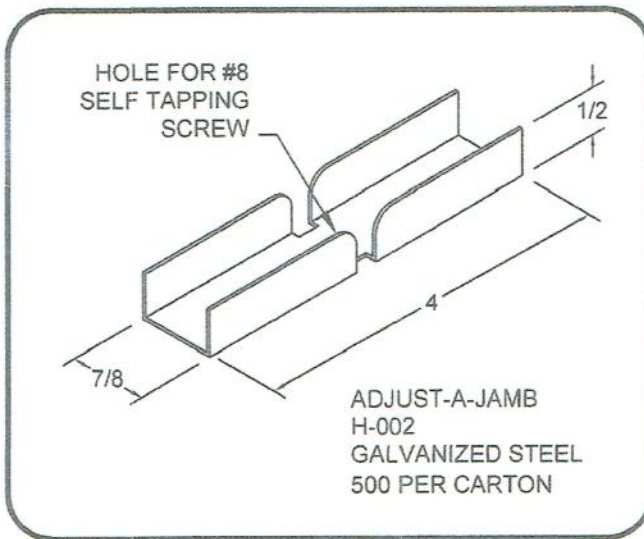
cc



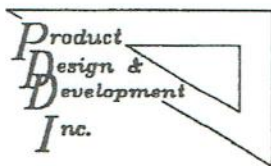
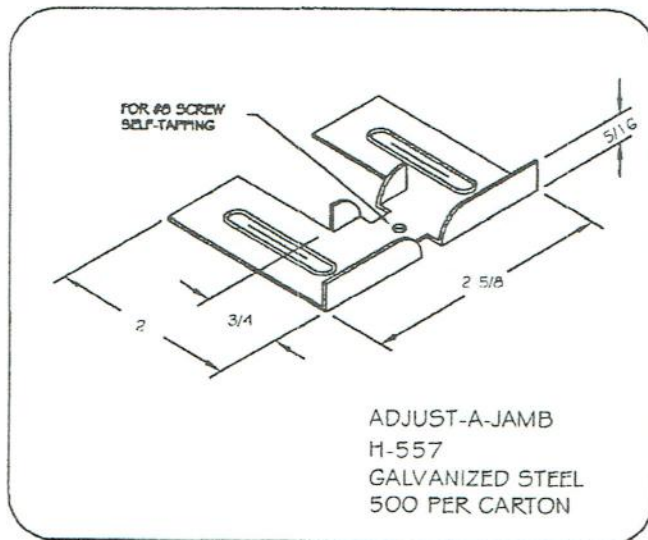
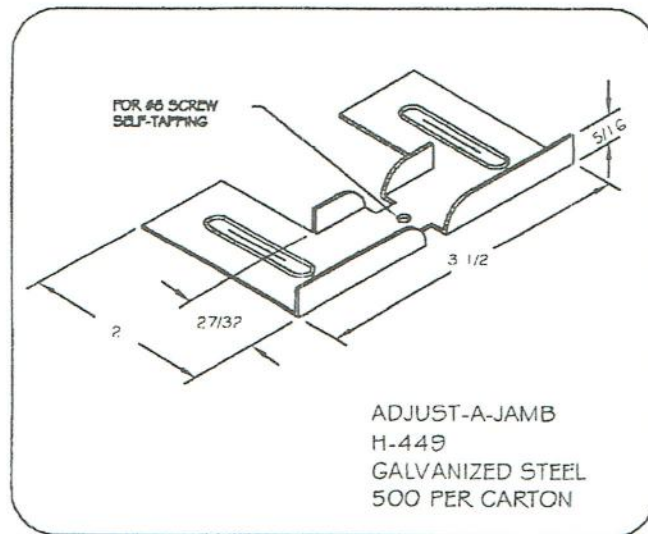
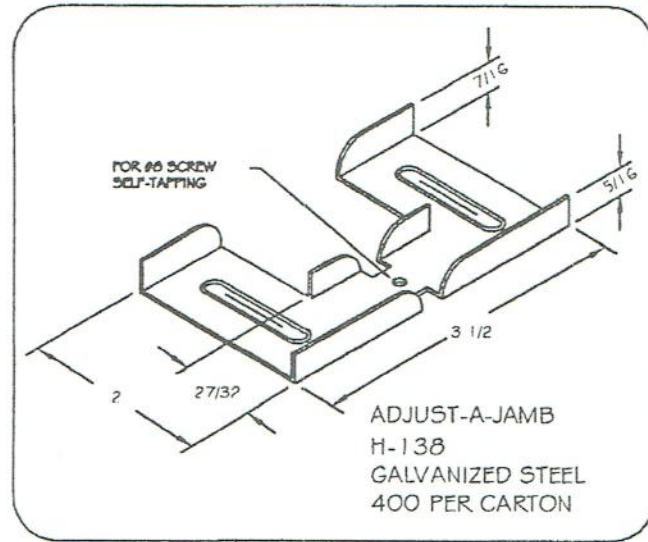
2603 KEYWAY DRIVE YORK, PENNSYLVANIA 17402 USA
PHONE # 717-741-4844 FAX # 717-741-4625

HARDWARE

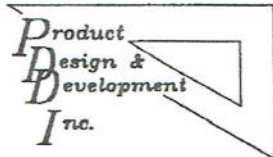
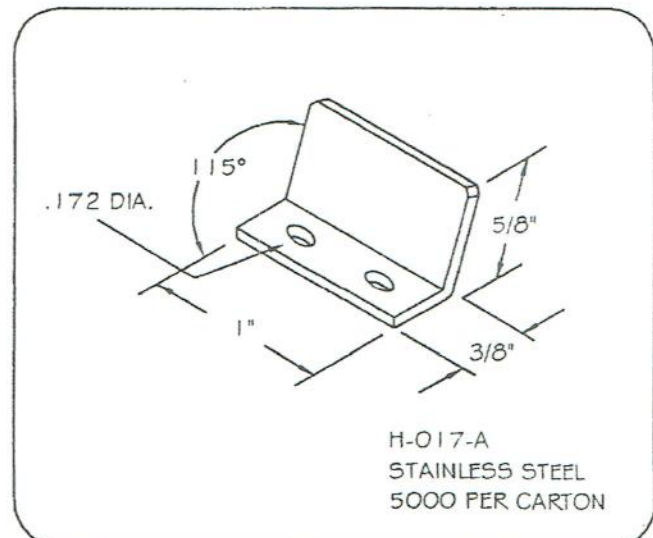
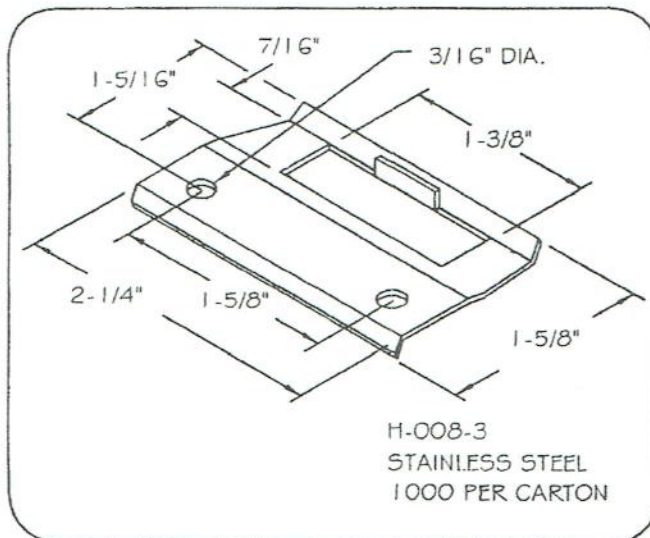
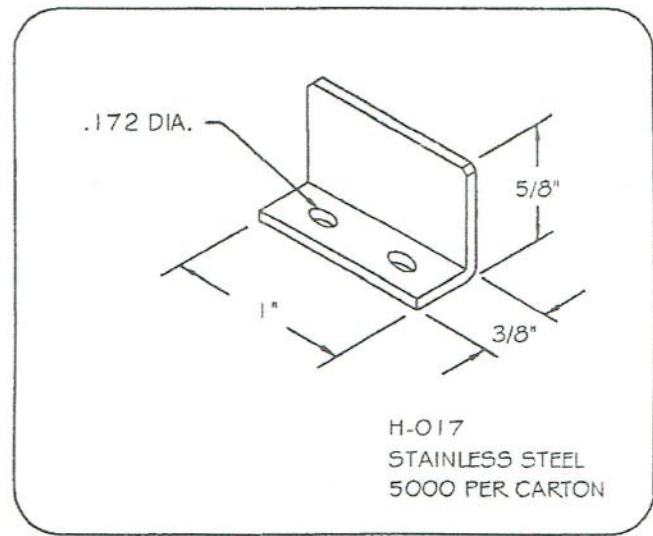
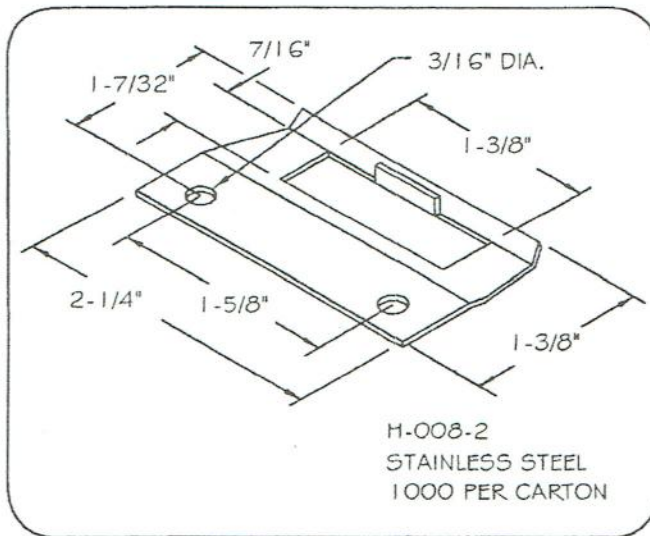
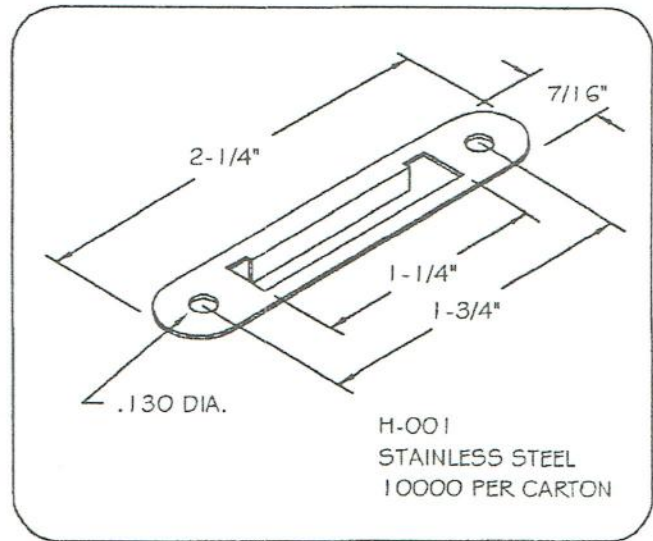
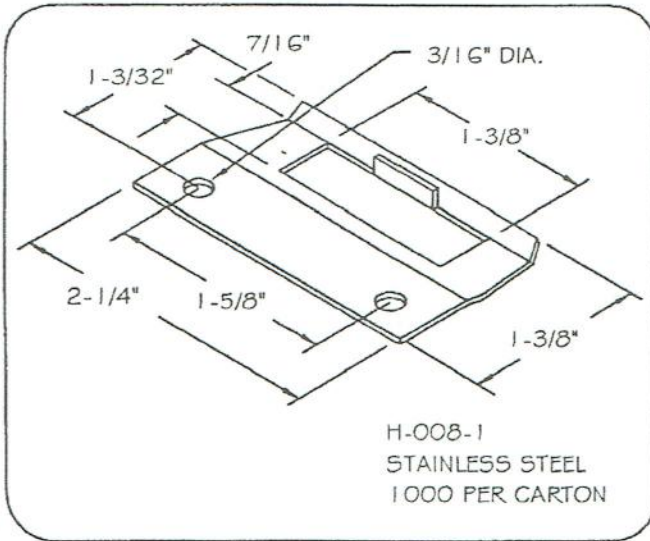
JAMB ADJUSTORS



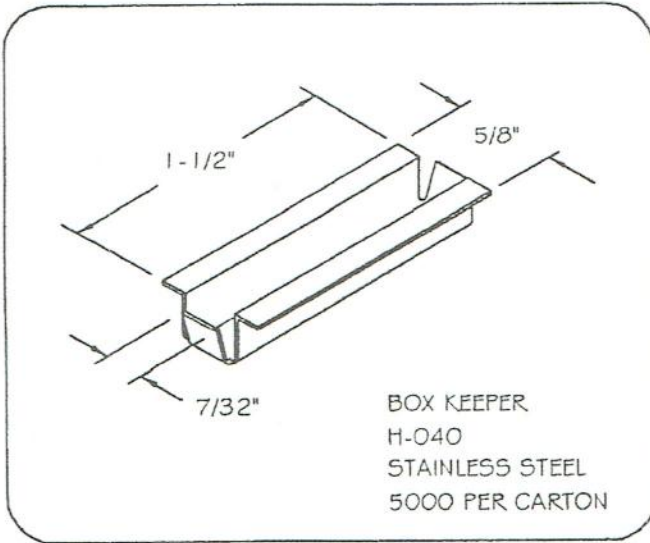
2603 KEYWAY DRIVE YORK, PENNSYLVANIA 17402 USA
 PH: 717-741-4844 FAX: 717-741-4625 EMAIL: pddi@comcast.net
 www.pddi.us



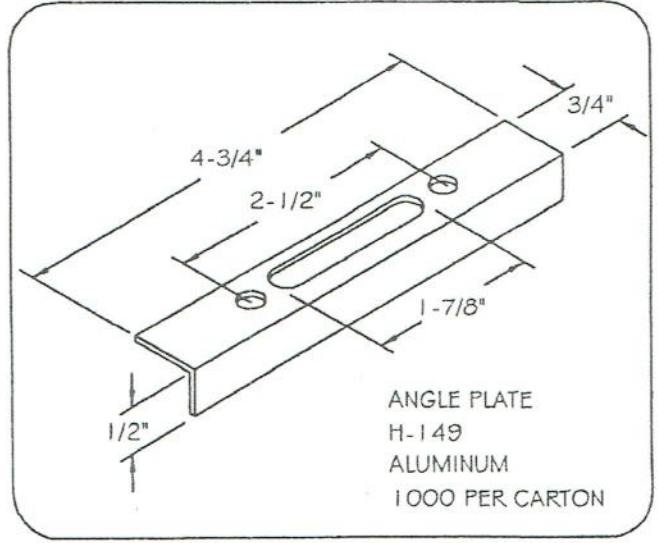
2603 KEYWAY DRIVE YORK, PENNSYLVANIA 17402 USA
PHONE # 717-741-4844 FAX # 717-741-4625



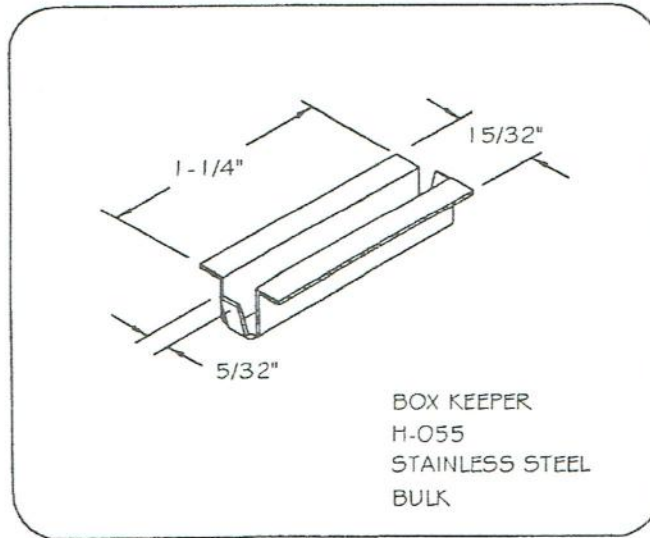
2603 KEYWAY DRIVE YORK, PENNSYLVANIA 17402 USA
PHONE # 717-741-4844 FAX # 717-741-4625



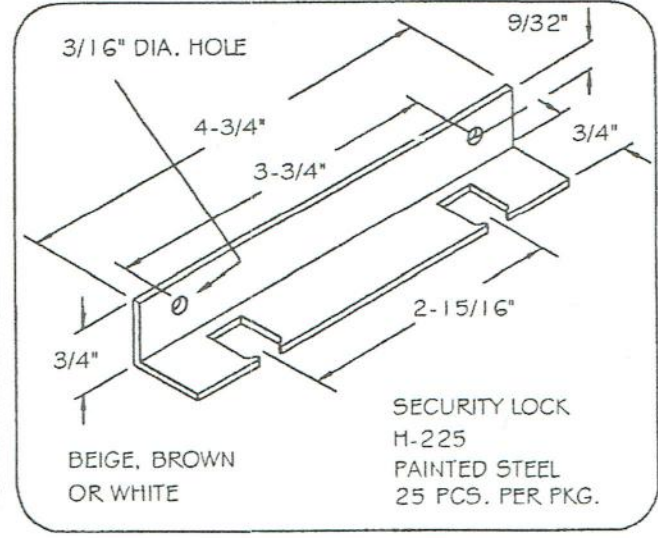
BOX KEEPER
H-040
STAINLESS STEEL
5000 PER CARTON



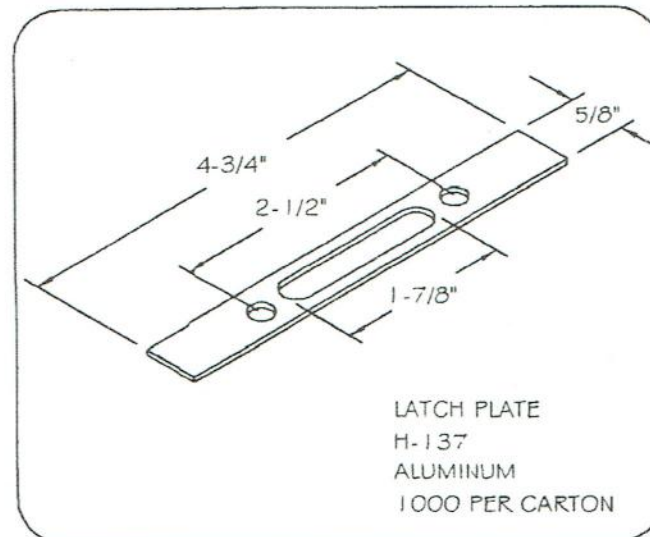
ANGLE PLATE
H-149
ALUMINUM
1000 PER CARTON



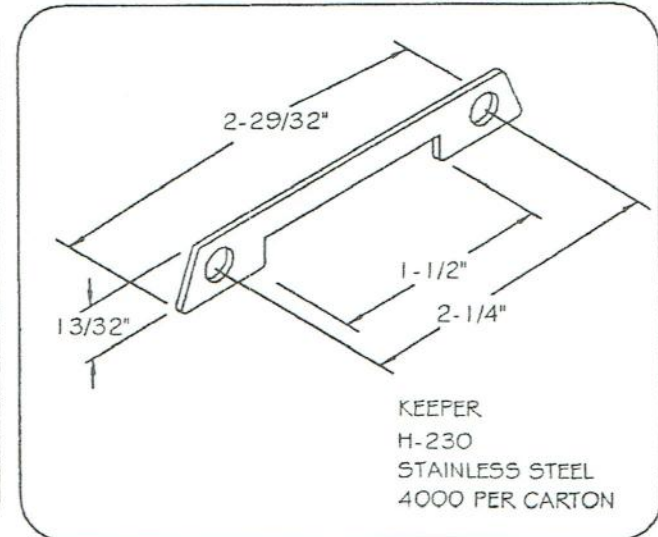
BOX KEEPER
H-055
STAINLESS STEEL
BULK



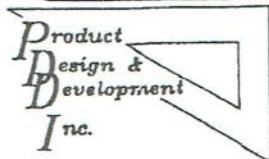
SECURITY LOCK
H-225
PAINTED STEEL
25 PCS. PER PKG.
BEIGE, BROWN
OR WHITE



LATCH PLATE
H-137
ALUMINUM
1000 PER CARTON



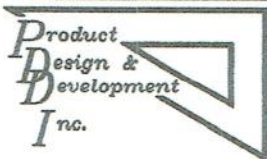
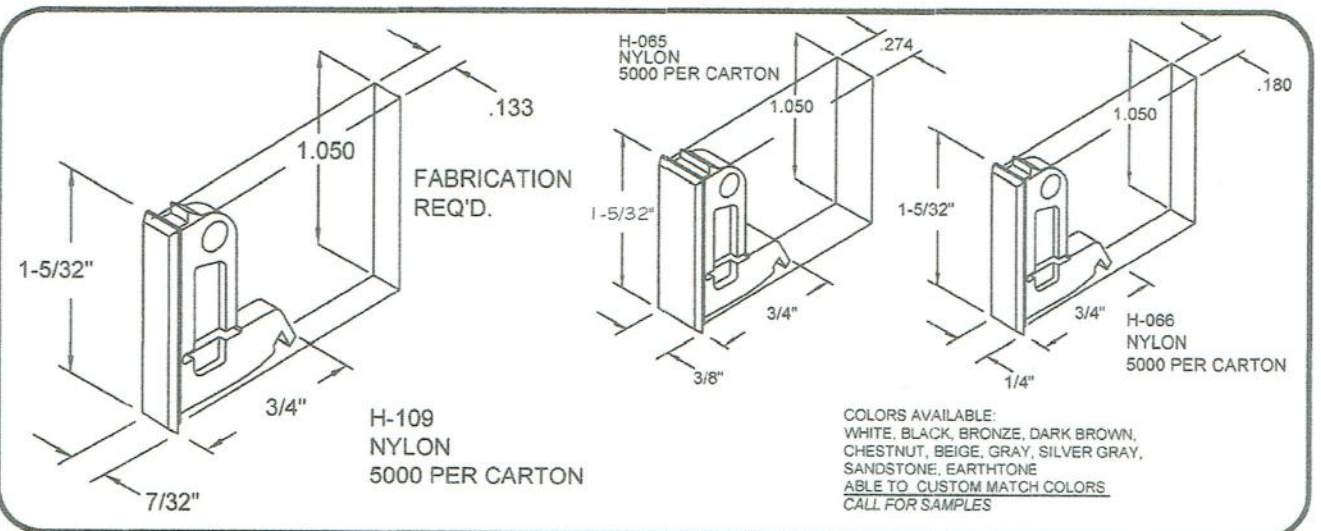
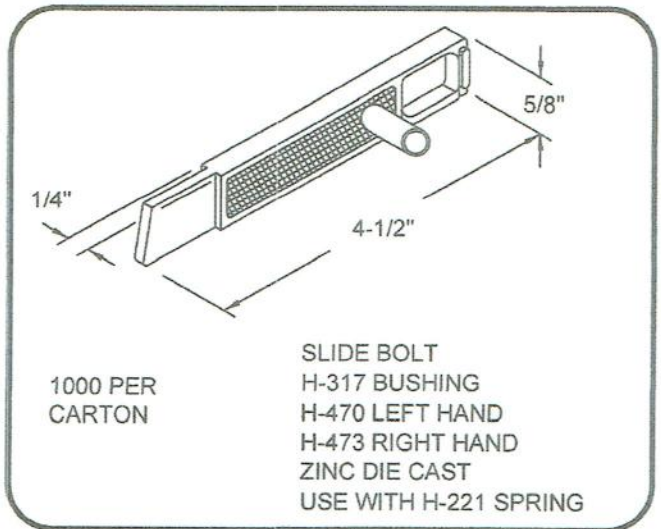
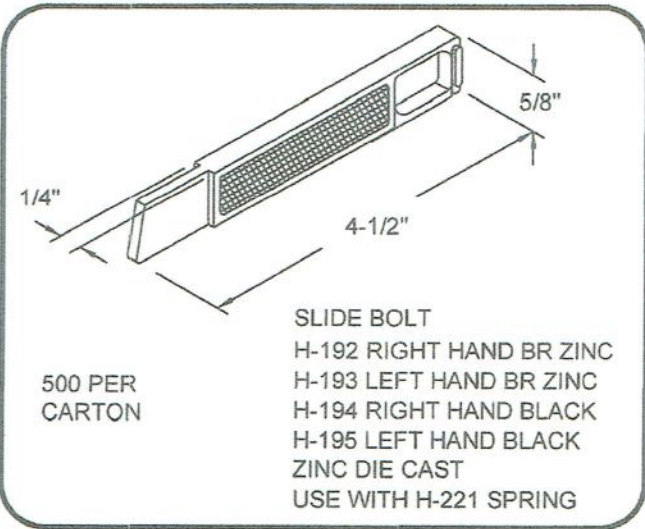
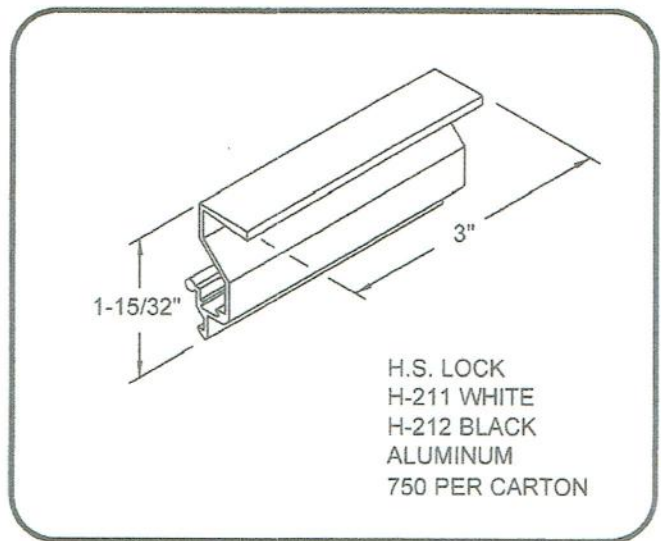
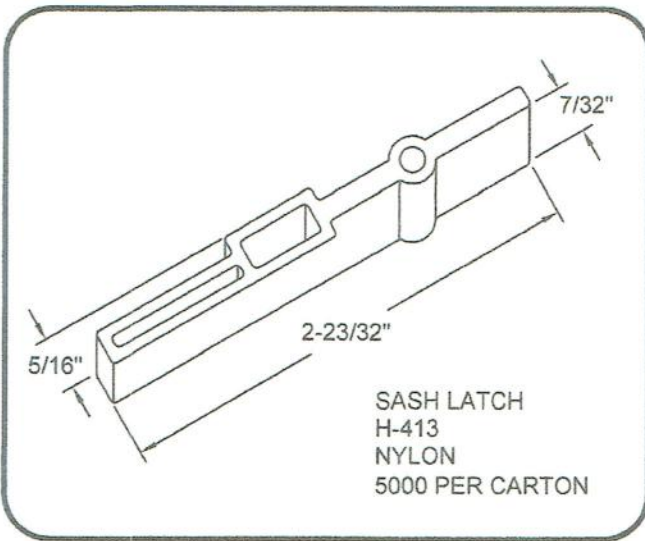
KEEPER
H-230
STAINLESS STEEL
4000 PER CARTON



2603 KEYWAY DRIVE YORK, PENNSYLVANIA 17402 USA
PHONE # 717-741-4844 FAX # 717-741-4625

HARDWARE

LATCHES

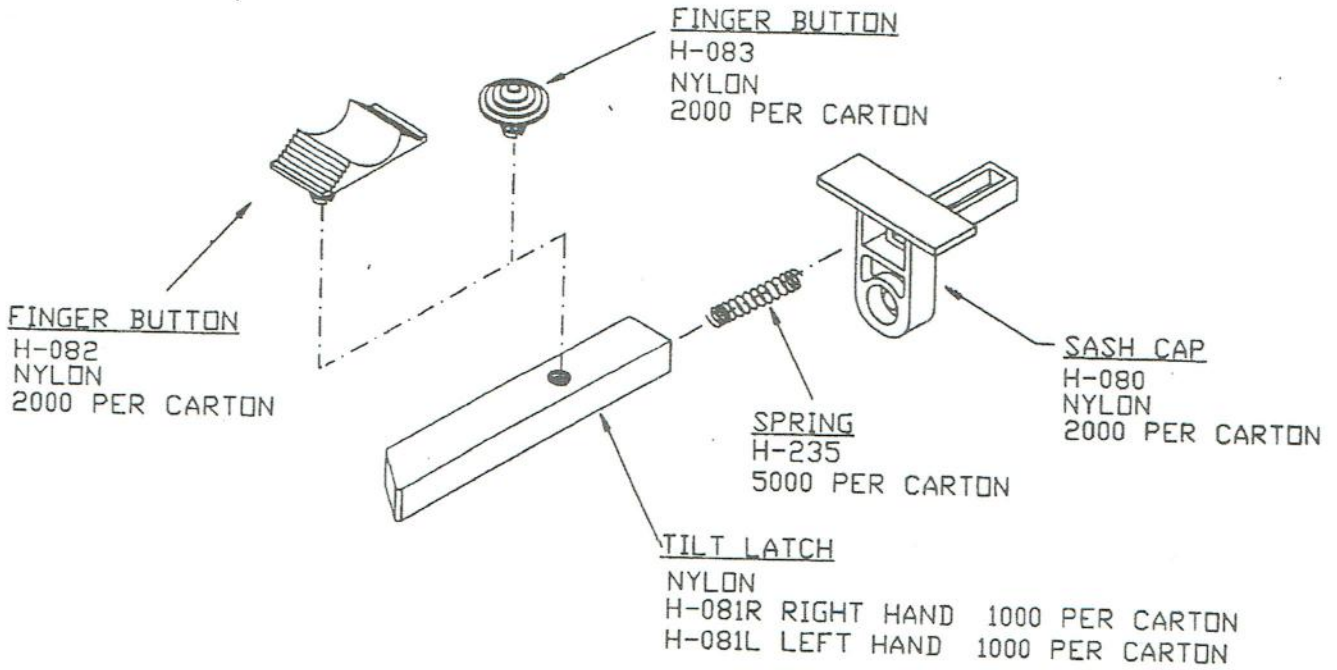


2603 KEYWAY DRIVE YORK, PENNSYLVANIA 17402 USA
 PH: 717-741-4844 FAX: 717-741-4625 EMAIL: pddi@comcast.net
 www.pddi.us

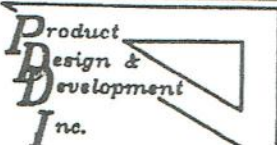
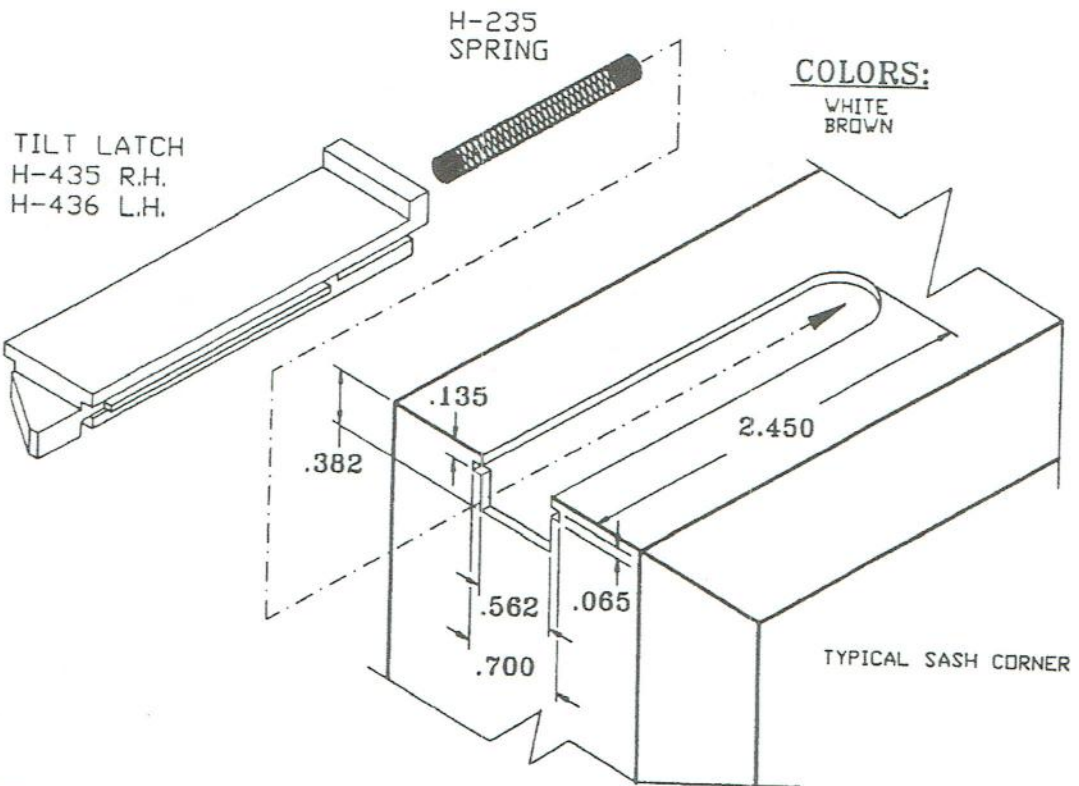
Hardware

LATCHES & SLIDES

AVAILABLE COLORS:
BEIGE & WHITE



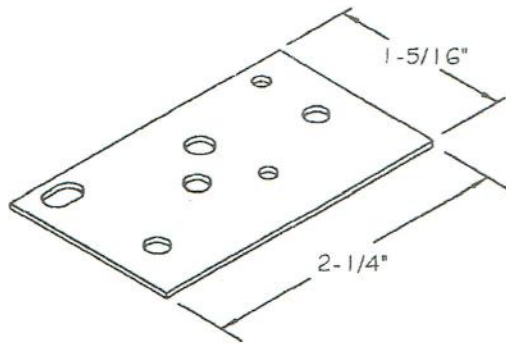
TILT LATCH



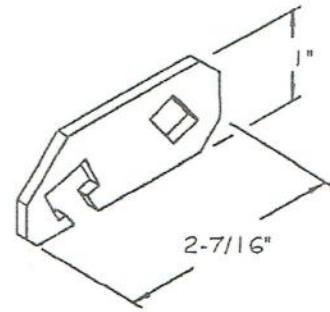
2603 KEYWAY DRIVE YORK, PENNSYLVANIA 17402 USA
PHONE # 717-741-4844 FAX # 717-741-4625

HARDWARE

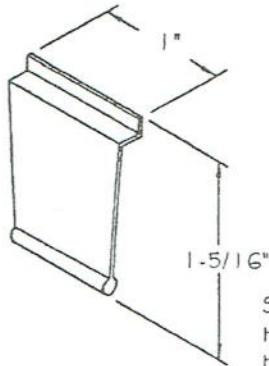
MISCELLANEOUS



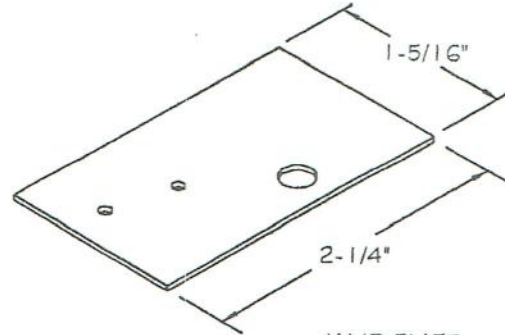
JAMB PLATE
H-108
GALVANIZED STEEL
1250 PER CARTON



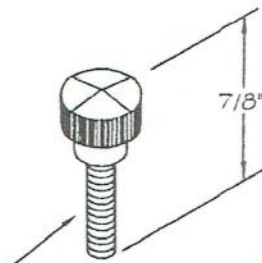
PAINT HANGER
H-229
STAINLESS STEEL
1000 PER CARTON



SCREEN PULL TAB
H-217 BLACK
H-216 WHITE
NYLON
5000 PER CARTON

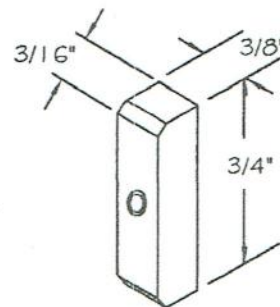


JAMB PLATE
H-228
GALVANIZED STEEL
1250 PER CARTON

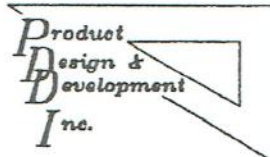


#8-32

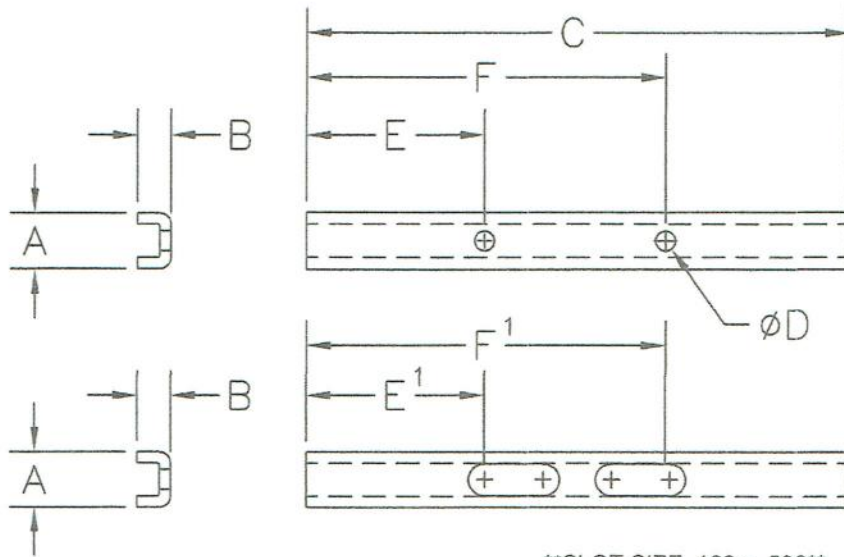
THUMB SCREW
H-269
ALUMINUM
BULK



DUST PLUG
H-371
NYLON
10000 PER CARTON



2603 KEYWAY DRIVE YORK, PENNSYLVANIA 17402 USA
PHONE # 717-741-4844 FAX # 717-741-4625



SLOT SIZE .160 x .500

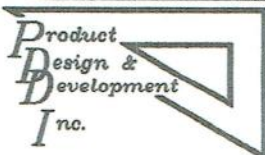
MATERIAL: CRS ZINC PLATED CHANNEL

PART NO.	A (IN.)	B (IN.)	C (IN.)	D (IN.)	E (IN.)	E ¹ (IN.)	F (IN.)	F ¹ (IN.)
H-033	.310	.188	3.00	.110	1.00			
H-033-2	.310	.188	3.00	.110	1.00		2.00	
H-093	.310	.188	3.00	#6-32	.62			
H-258	.310	.188	2.62	.110	1.12			

MATERIAL: STAINLESS STEEL CHANNEL

PART NO.	A (IN.)	B (IN.)	C (IN.)	D (IN.)	E (IN.)	E ¹ (IN.)	F (IN.)	F ¹ (IN.)
H-352	.310	.188	3.00	SLOT		1.15		1.85
H-071	.480	.300	3.00	.147	.50		1.00	
H-153	.480	.300	3.00	#8-32	.50		1.00	

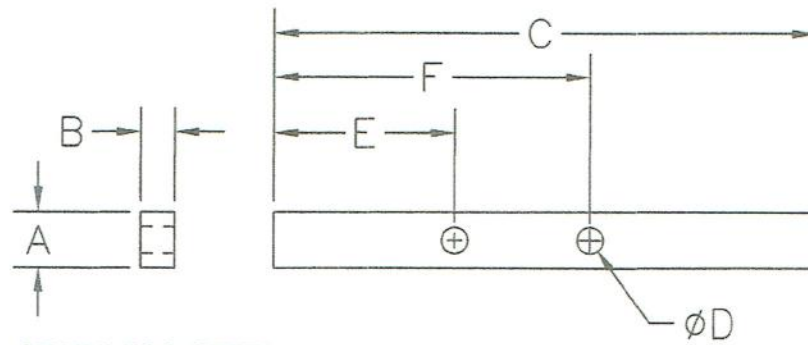
CUSTOM SIZES & CONFIGURATIONS CAN BE MANUFACTURED



2603 KEYWAY DRIVE YORK, PENNSYLVANIA 17402 USA
 PH: 717-741-4844 FAX: 717-741-4625 EMAIL: pddi@comcast.net
 www.pddi.us

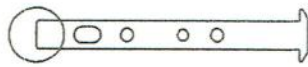
HARDWARE

PIVOT BARS

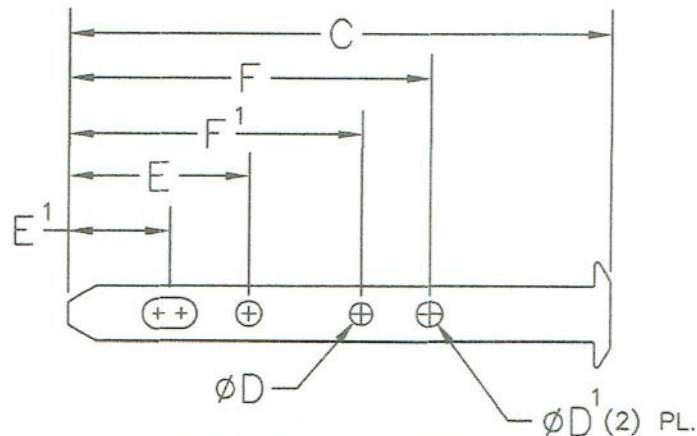
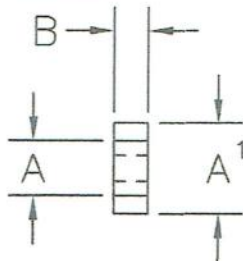


MATERIAL: STAINLESS STEEL

PART NO.	A (IN.)	B (IN.)	C (IN.)	D (IN.)	E (IN.)	E ¹ (IN.)	F (IN.)	F ¹ (IN.)
H-089	.312	.187	3.00	.149	2.00			
H-240	.312	.187	3.00	#8-32	2.00			
H-740	.340	.168	3.00	.187	1.62			
H-789	.388	.173	2.50	.177	.75			
H-104	.388	.173	3.00	.149	2.00			
H-414	.388	.173	3.00	#8-32	2.00			



END NOT TAPERED
ON H-695

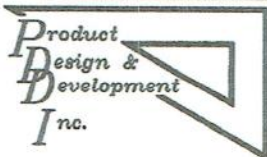


SLOT SIZE .164 x .289

MATERIAL: ZINC DIE CAST

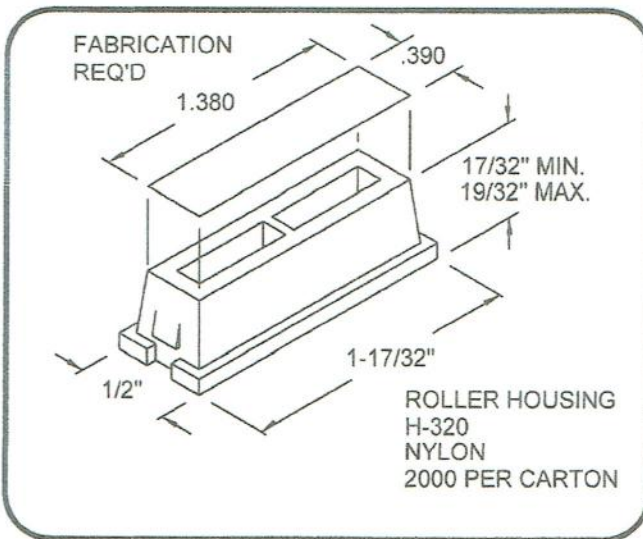
PART NO.	A (IN.)	A ¹ (IN.)	B (IN.)	C (IN.)	D (IN.)	D ¹ (IN.)	E (IN.)	E ¹ (IN.)	F (IN.)	F ¹ (IN.)
H-661	.310	.590	.187	3.00	.125	.142	1.00	.562	2.00	1.62
H-691	.310	.440	.187	3.00	.142	.142	1.00	.562	2.00	1.62
H-695	.310	.510	.187	3.00	.142	.142	1.00	.562	2.00	1.50

CUSTOM SIZES & CONFIGURATIONS CAN BE MANUFACTURED

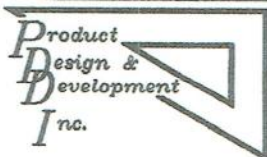
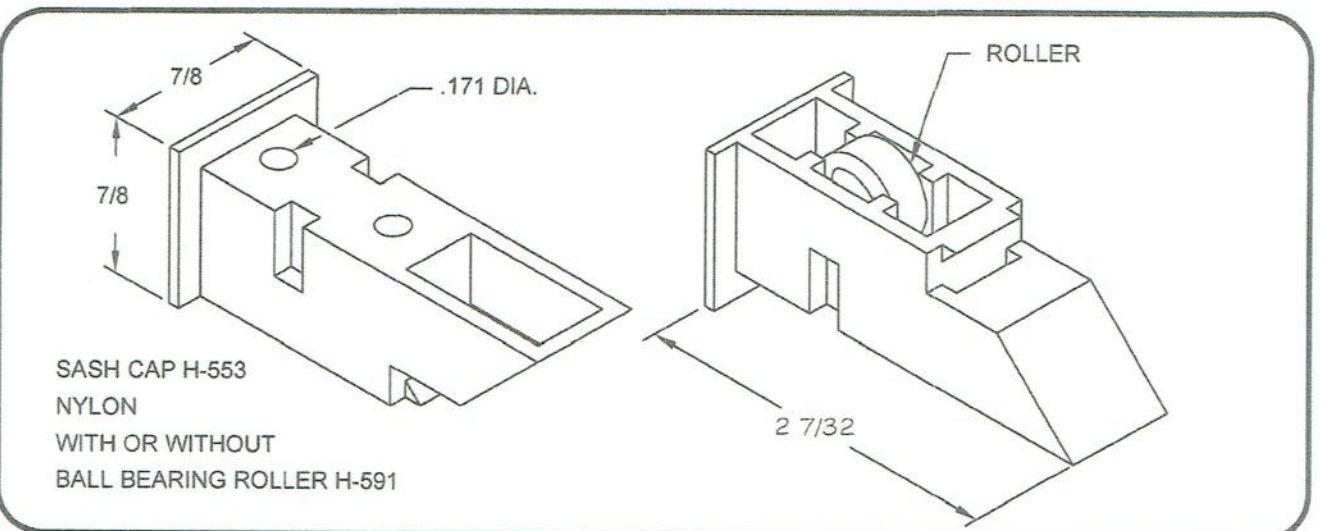
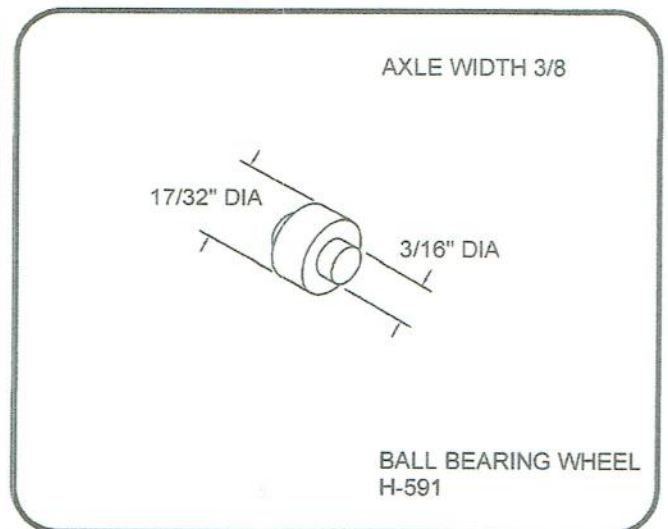
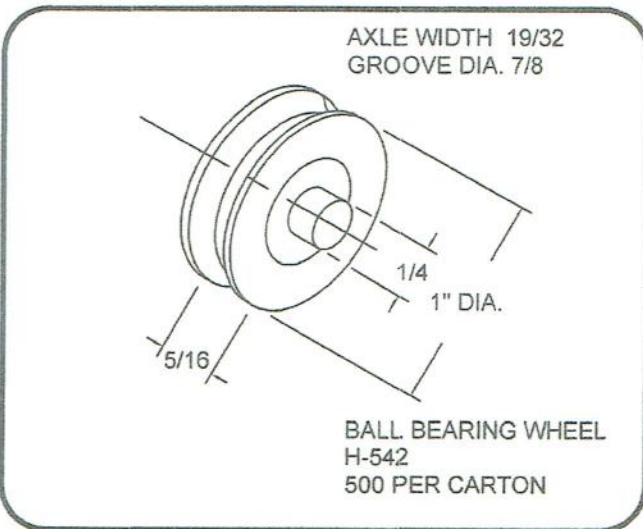
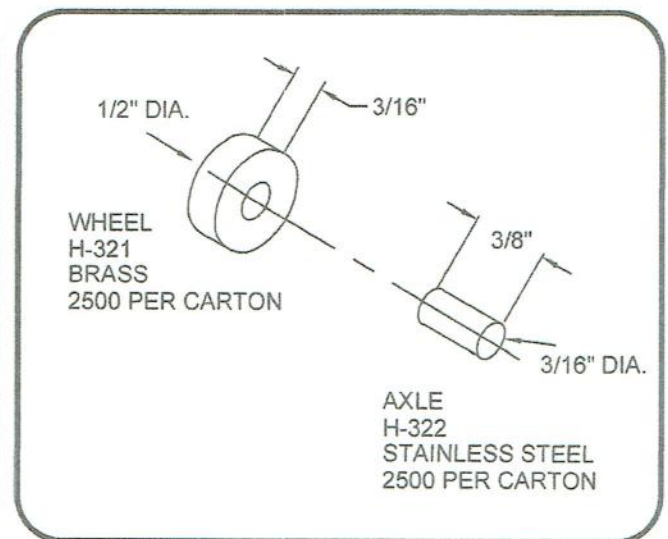


2603 KEYWAY DRIVE YORK, PENNSYLVANIA 17402 USA
 PH: 717-741-4844 FAX: 717-741-4625 EMAIL: pddi@comcast.net
 www.pddi.us

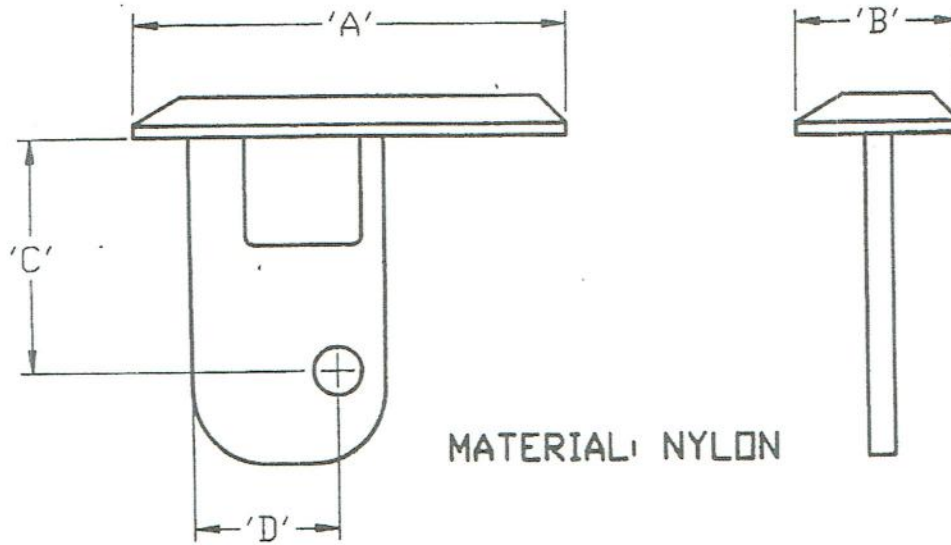
HARDWARE



ROLLERS & WHEELS

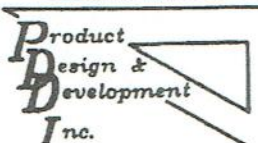


2603 KEYWAY DRIVE YORK, PENNSYLVANIA 17402 USA
 PH: 717-741-4844 FAX: 717-741-4625 EMAIL: pddi@comcast.net
 www.pddi.us

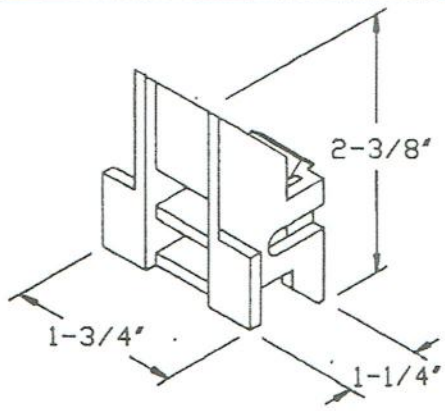


MATERIAL: NYLON

PART NO.	LENGTH 'A'	WIDTH 'B'	HOLE LOCATION	
			'C'	'D'
H-080	1.442	.500	.923	.330
H-300	1.729	.750	.974	.769
H-301	1.729	1.243	.975	.782
H-372	.824	.563		
H-374	1.729	1.499	.974	.769
H-391	1.729	1.617	.974	.782
H-398	1.500	.572	.807	.505
H-399	1.438	.596	.847	.559
H-400	1.375	.628	.807	.507
H-401	1.582	.916	.758	.694
H-402	1.804	.494	.889	.657
H-412	1.658	.500	.992	.703
H-420	1.442	.500	.923	.330
H-434	.660	.660	.888	.330
H-466	.958	.750	.927	.324
H-564	1.884	.624	1.224	.155

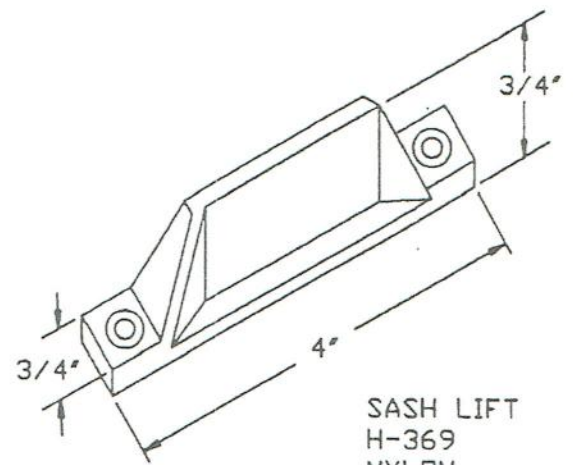


2603 KEYWAY DRIVE YORK, PENNSYLVANIA 17402 USA
 PHONE # 717-741-4844 FAX # 717-741-4625

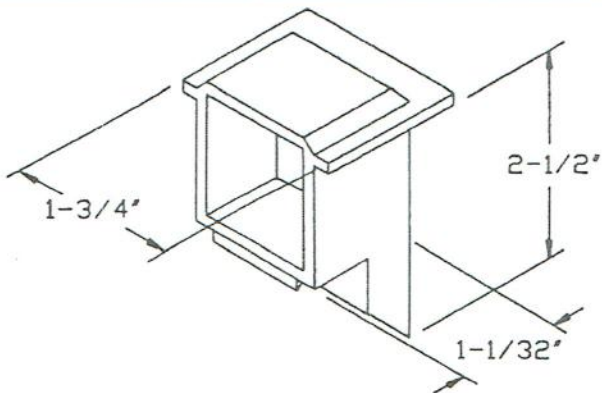


COLOR:
BLACK

TOP GUIDE
H-075
NYLON
1000 PER CARTON

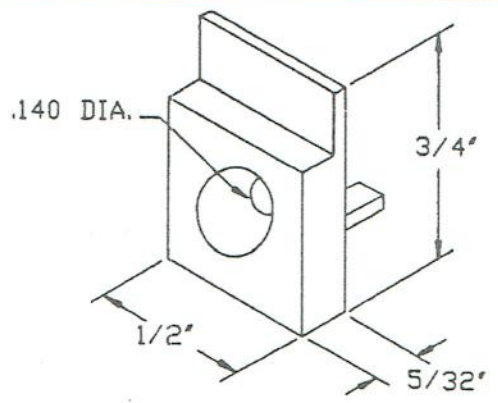


SASH LIFT
H-369
NYLON



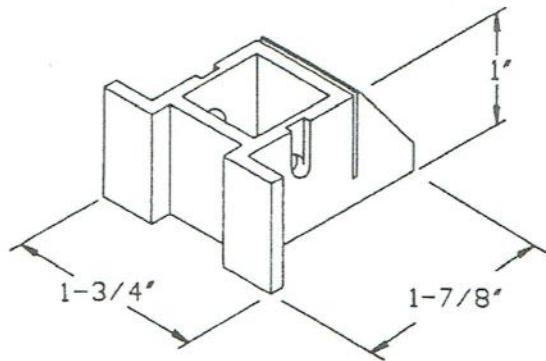
COLOR:
BLACK

SASH CAP
H-076
NYLON
1000 PER CARTON



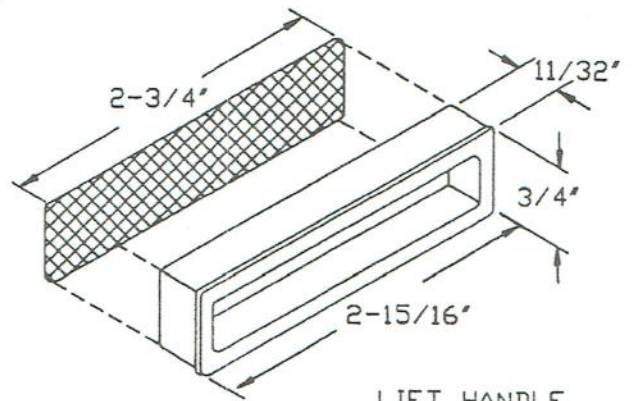
COLORS:
BEIGE, BLACK,
BROWN OR WHITE

SASH GUIDE
H-376
NYLON
1000 PER CARTON

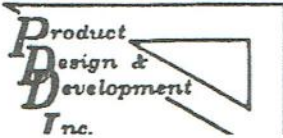


COLOR:
BLACK

BOTTOM GUIDE
H-077
NYLON
1000 PER CARTON

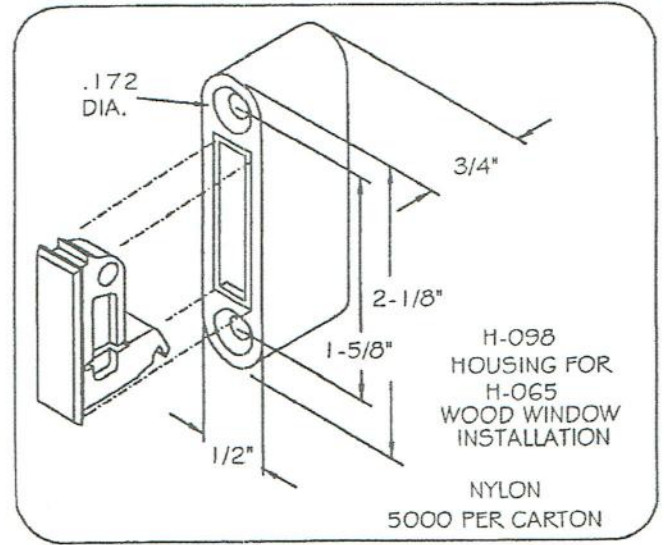
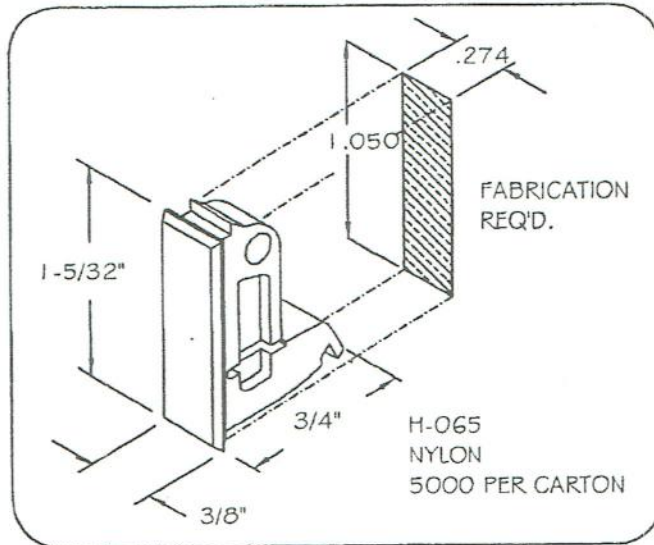


LIFT HANDLE
H-481
NYLON
1000 PER CARTON



HARDWARE

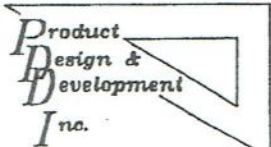
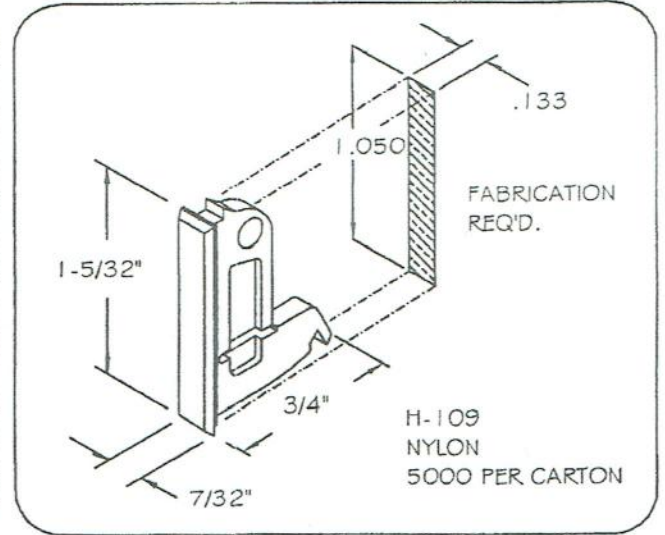
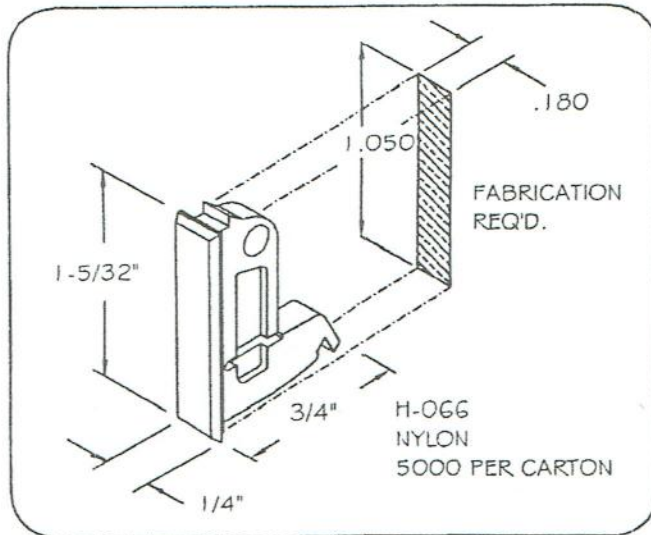
SASH STOPS



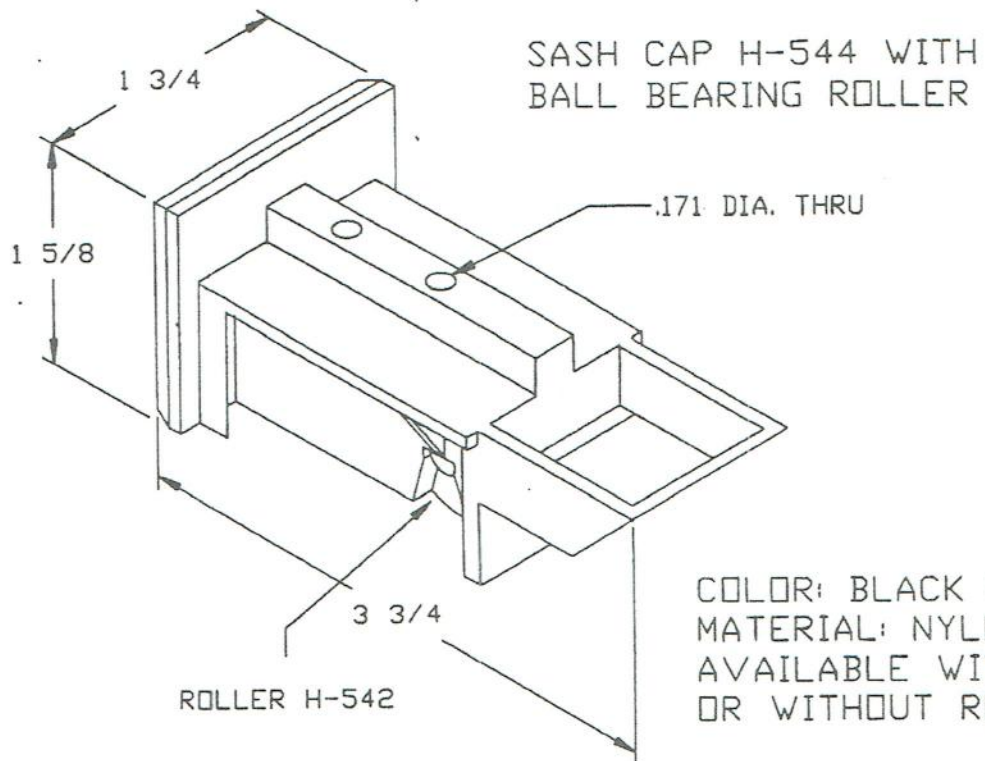
Available colors for Nylon stops are:

- BG - BEIGE
- BK - BLACK
- BR - BROWN
- BZ - BRONZE
- ET - EARTH TONE
- WH - WHITE

When ordering please specify color.

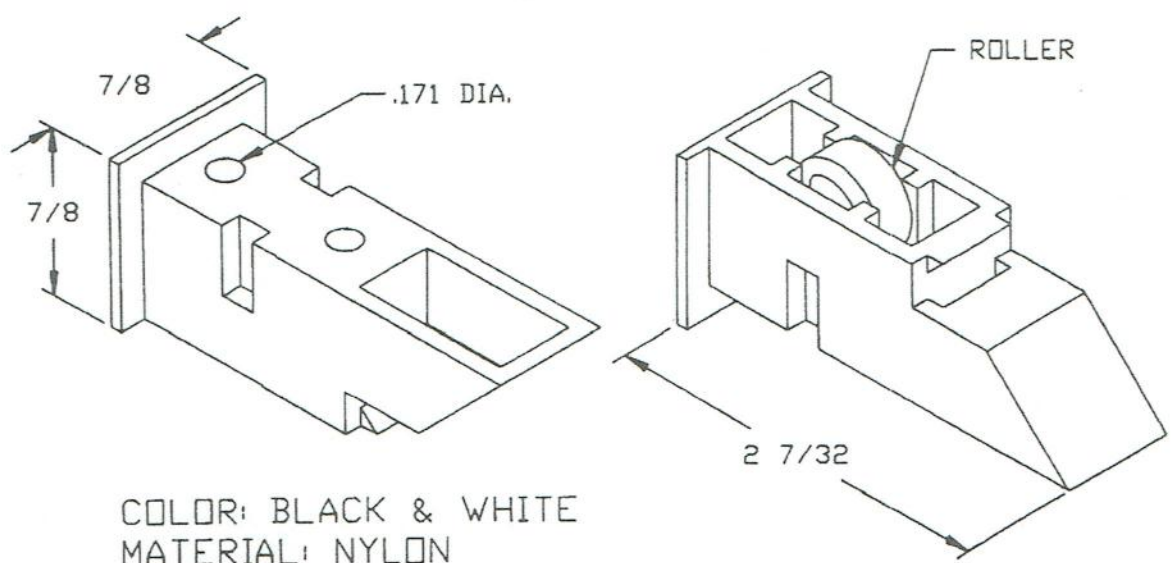


2603 KEYWAY DRIVE PH: (717)741-4844
YORK, PENNSYLVANIA FAX: (717)741-4625
17402 USA
www.pddi.us

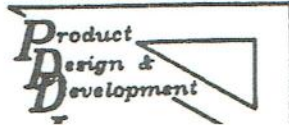


COLOR: BLACK & WHITE
 MATERIAL: NYLON
 AVAILABLE WITH OR WITHOUT ROLLER

SASH CAP H-553 WITH OR WITHOUT BALL BEARING ROLLER H-591

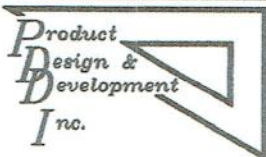
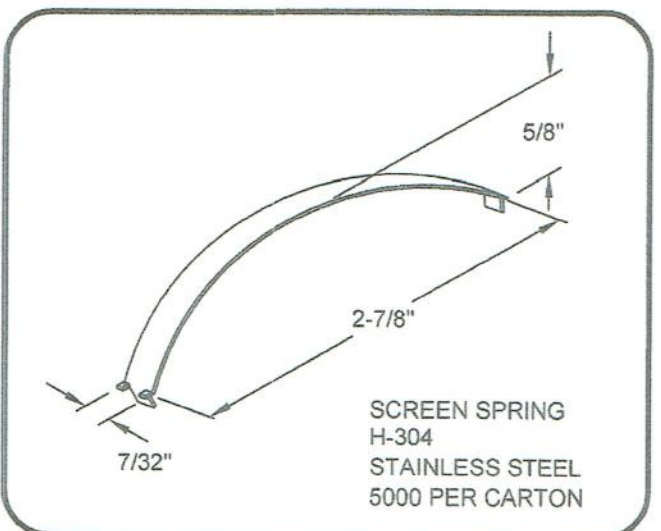
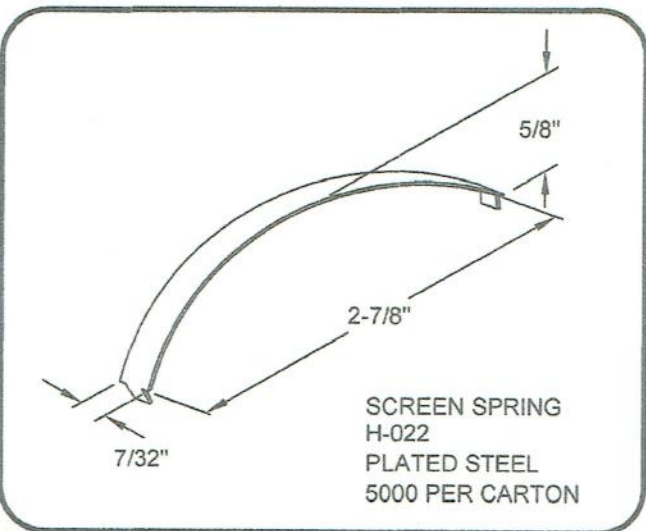
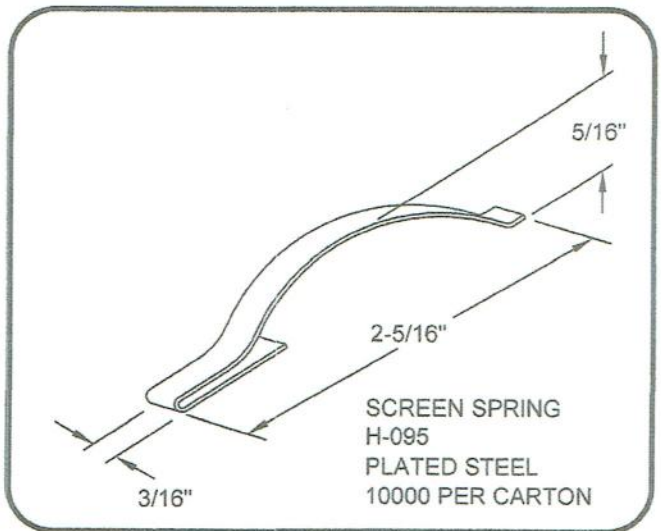
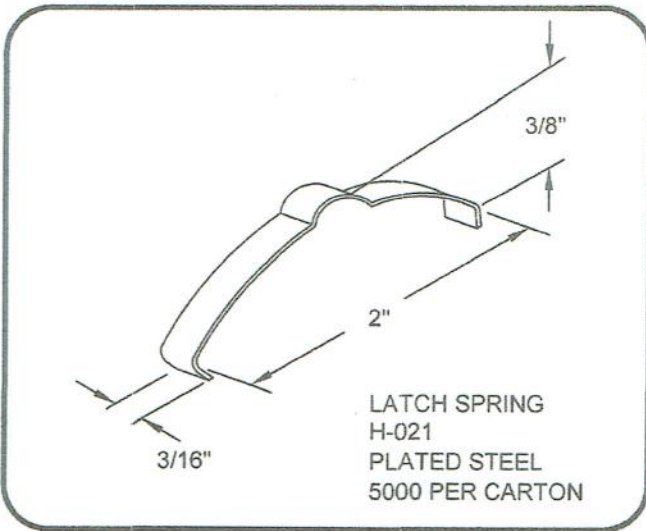
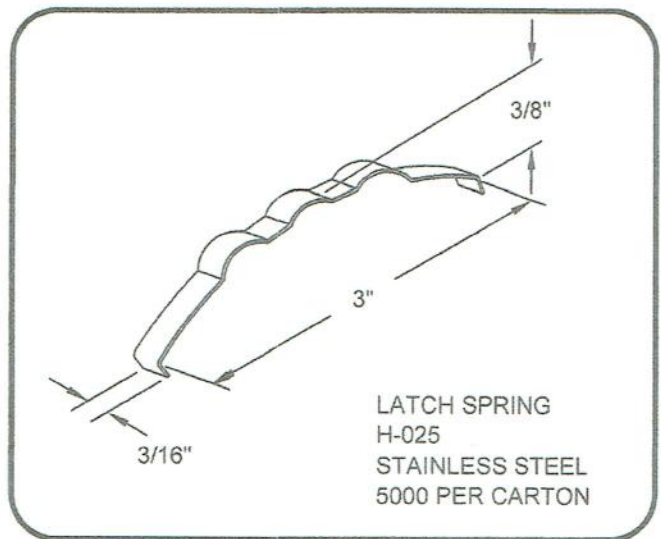
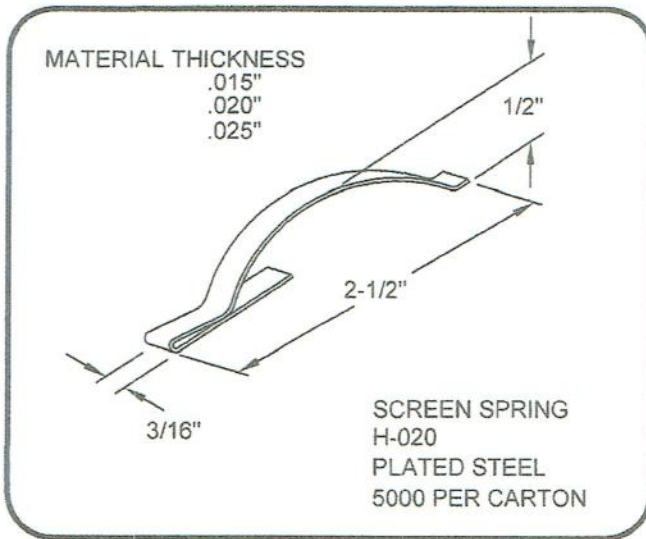


COLOR: BLACK & WHITE
 MATERIAL: NYLON



HARDWARE

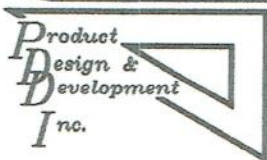
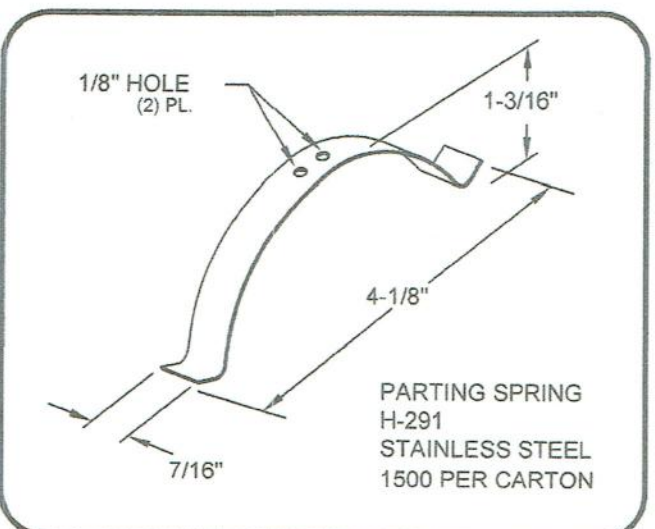
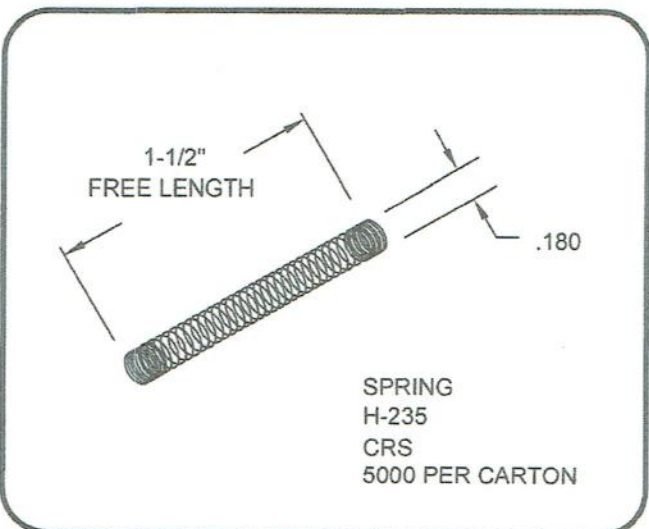
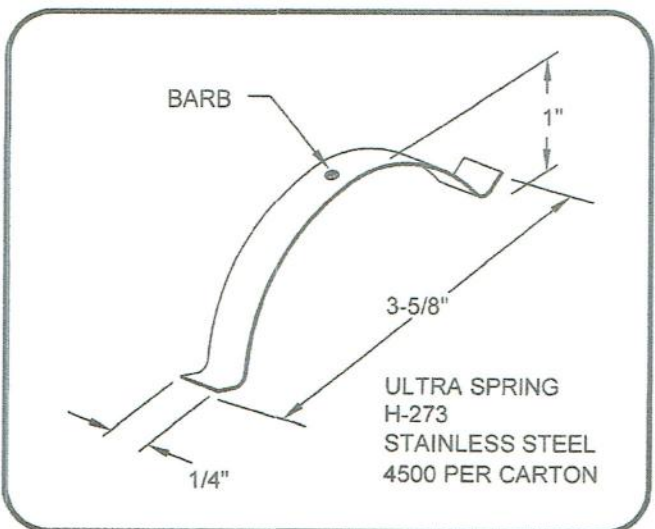
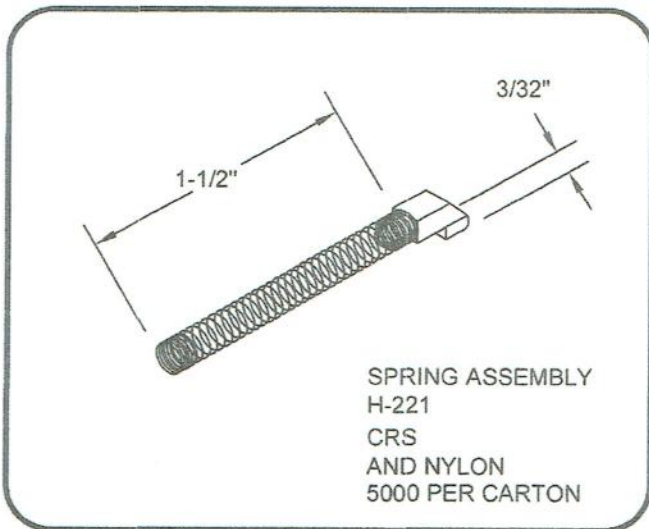
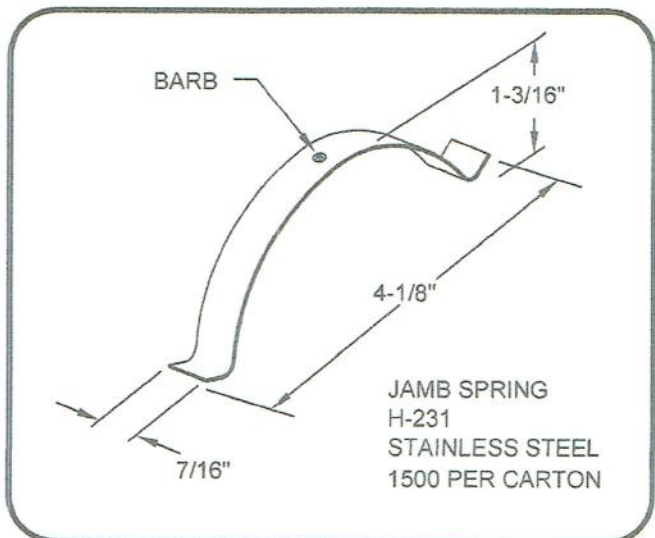
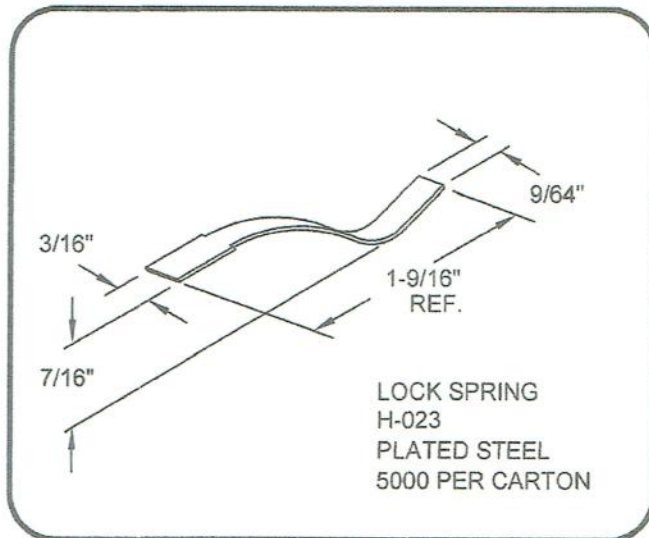
SPRINGS



2603 KEYWAY DRIVE YORK, PENNSYLVANIA 17402 USA
 PH: 717-741-4844 FAX: 717-741-4625 EMAIL: pddi@comcast.net
www.pddi.us

HARDWARE

SPRINGS

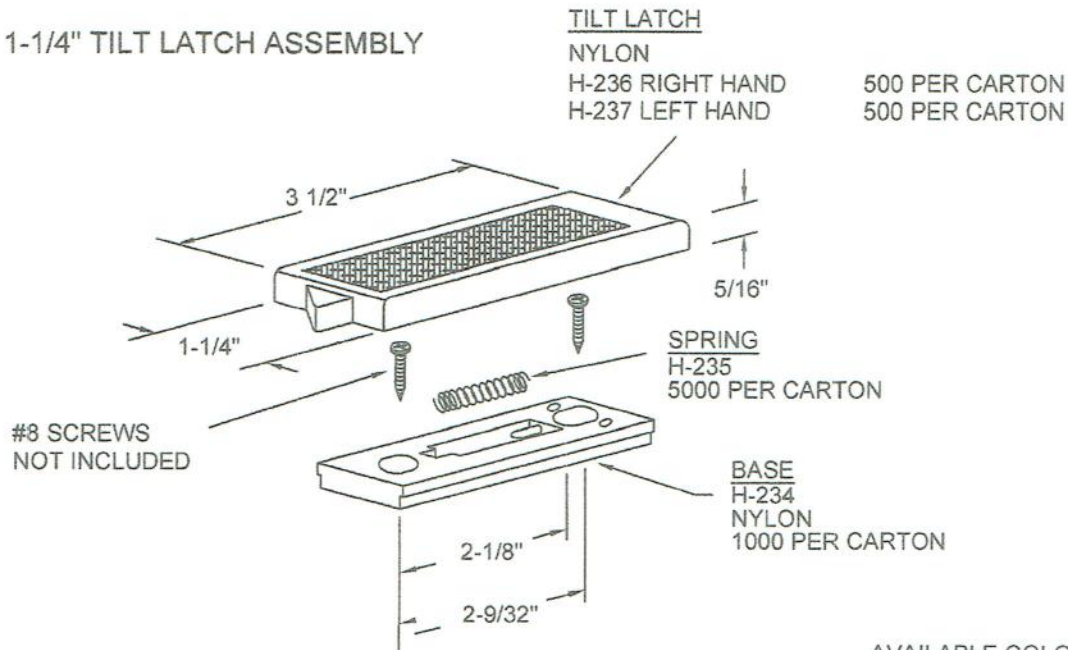


2603 KEYWAY DRIVE YORK, PENNSYLVANIA 17402 USA
 PH: 717-741-4844 FAX: 717-741-4625 EMAIL: pddi@comcast.net
 www.pddi.us

HARDWARE

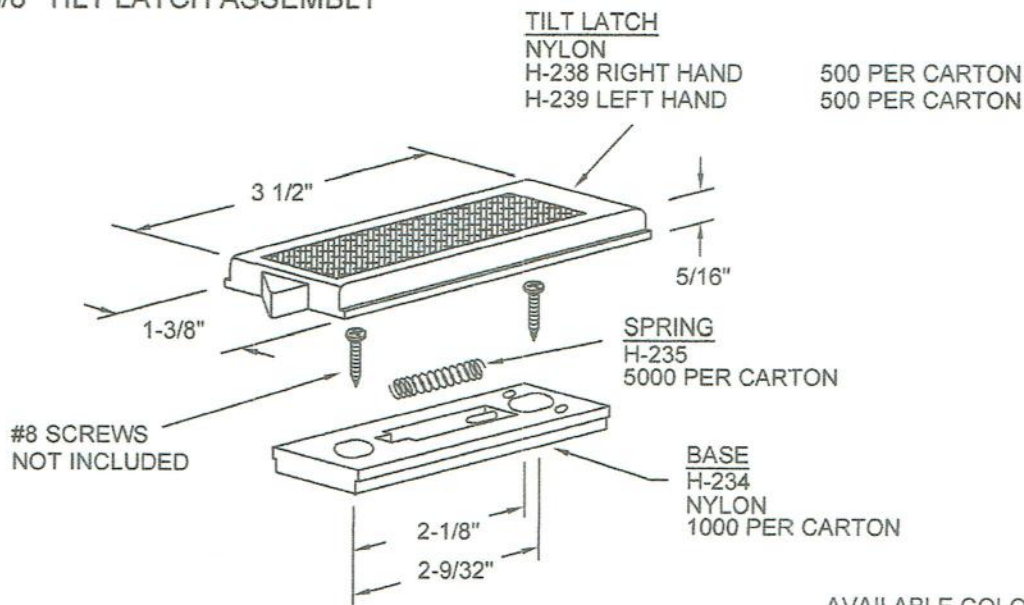
TILT LATCHES

1-1/4" TILT LATCH ASSEMBLY

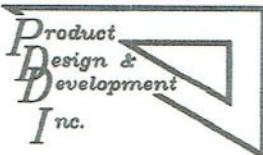


AVAILABLE COLORS:
BROWN, BLACK & WHITE

1 3/8" TILT LATCH ASSEMBLY



AVAILABLE COLORS:
BROWN, BLACK & WHITE

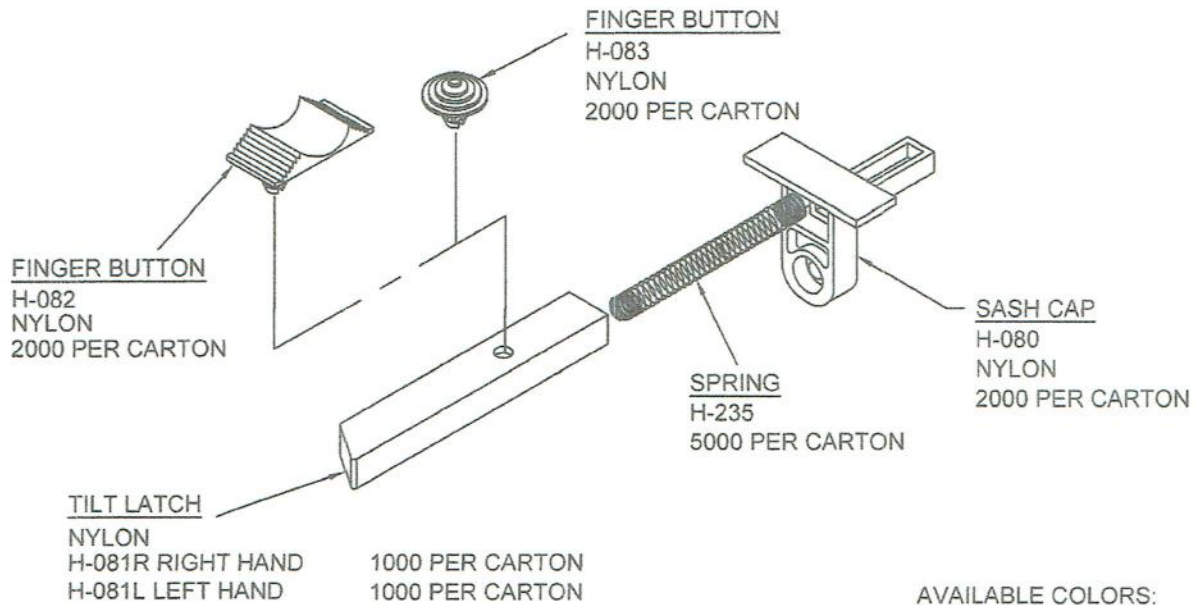


2603 KEYWAY DRIVE YORK, PENNSYLVANIA 17402 USA
PH: 717-741-4844 FAX: 717-741-4625 EMAIL: pddi@comcast.net
www.pddi.us

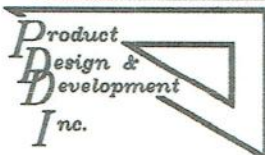
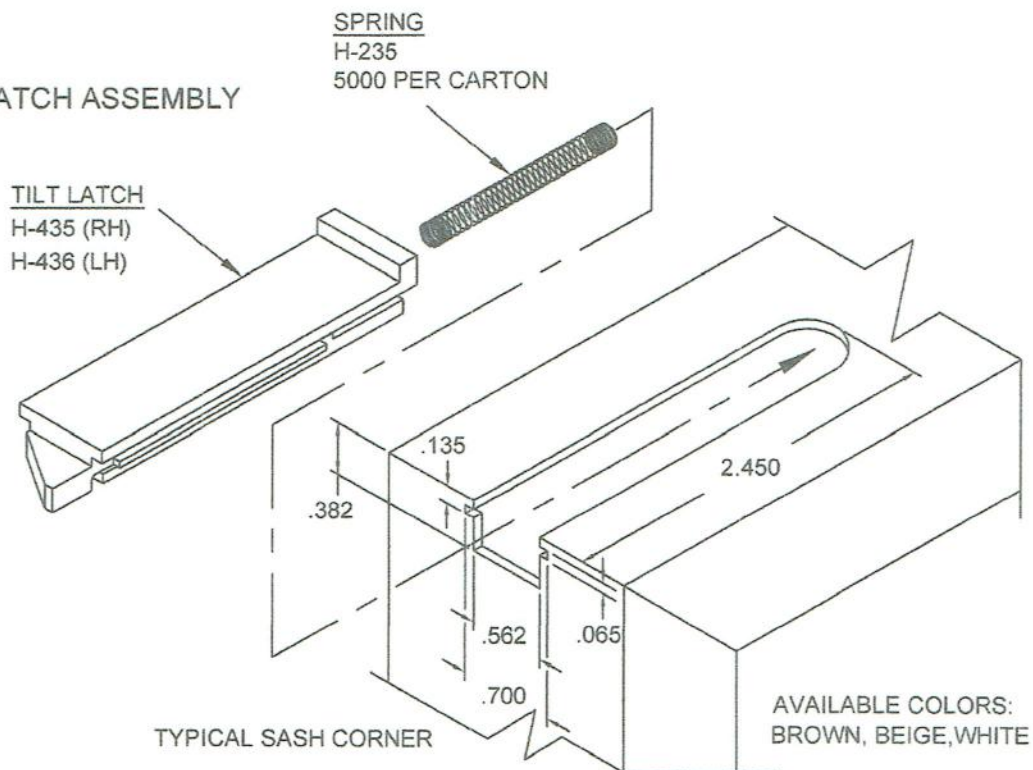
HARDWARE

TILT LATCHES

TILT LATCH ASSEMBLY



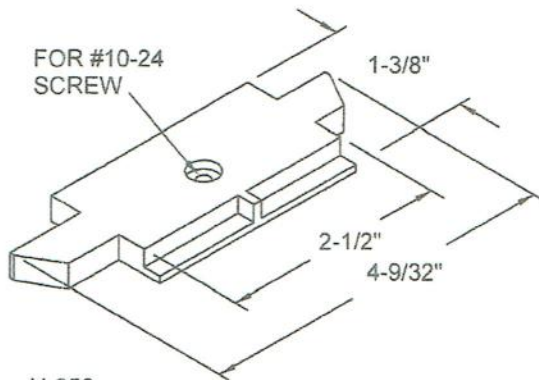
TILT LATCH ASSEMBLY



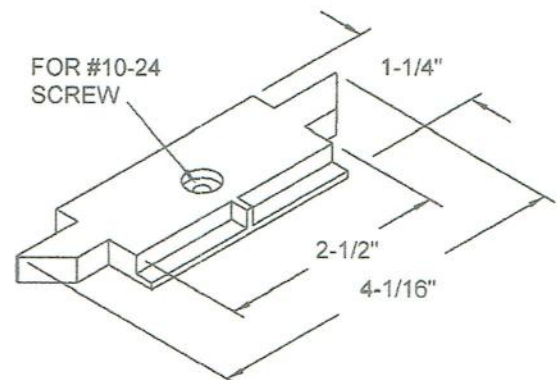
2603 KEYWAY DRIVE YORK, PENNSYLVANIA 17402 USA
 PH: 717-741-4844 FAX: 717-741-4625 EMAIL: pddi@comcast.net
 www.pddi.us

HARDWARE

TILT LATCHES

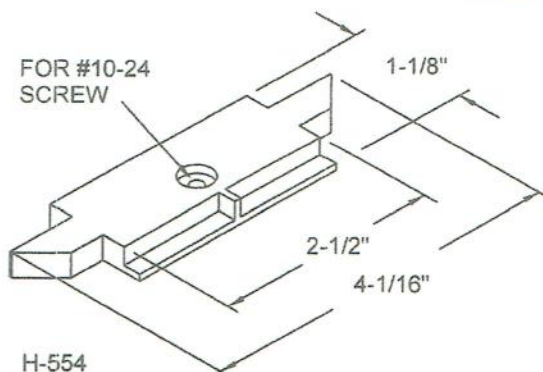


H-056
ZINC DIE CAST
200 PER CARTON

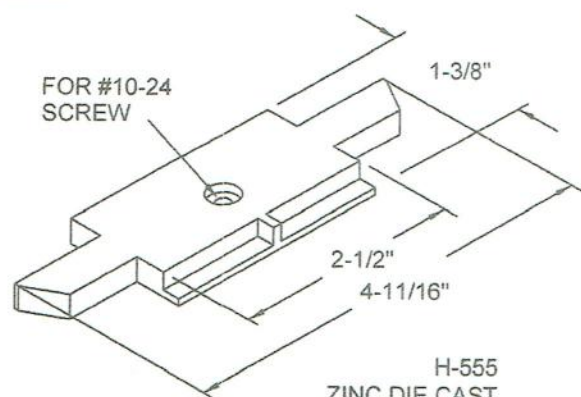


H-482
ZINC DIE CAST
200 PER CARTON

CUSTOM SIZES AND SHAPES CAN BE MANUFACTURED

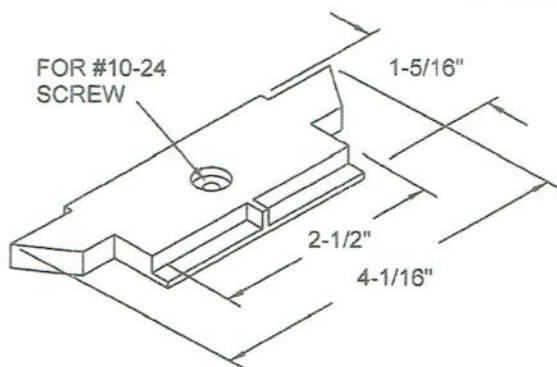


H-554
ZINC DIE CAST
200 PER CARTON

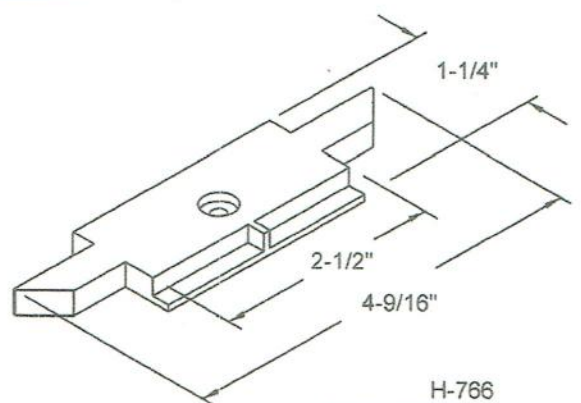


H-555
ZINC DIE CAST
200 PER CARTON

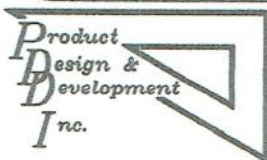
ALL TILT LATCHES USE H-235 SPRINGS



H-764
ZINC DIE CAST
200 PER CARTON



H-766
ZINC DIE CAST
200 PER CARTON



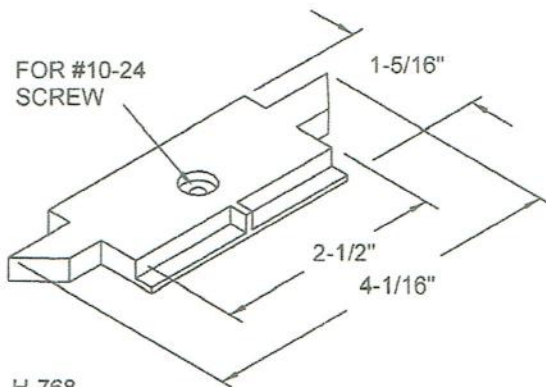
2603 KEYWAY DRIVE YORK, PENNSYLVANIA 17402 USA

PH: 717-741-4844 FAX: 717-741-4625 EMAIL: pddi@comcast.net

www.pddi.us

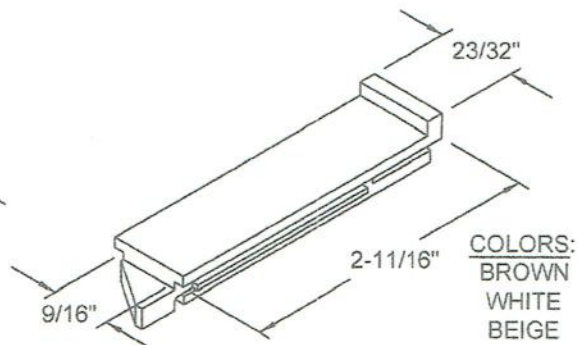
HARDWARE

TILT LATCHES



FOR #10-24
SCREW

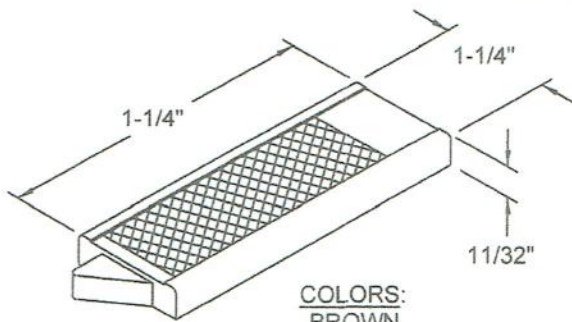
H-768
ZINC DIE CAST
200 PER CARTON



COLORS:
BROWN
WHITE
BEIGE

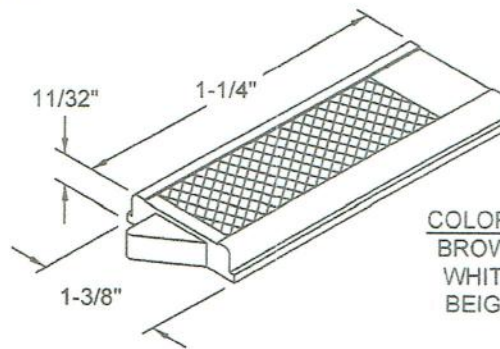
H-435 RIGHT HAND
H-436 LEFT HAND
NYLON
1000 PER CARTON

**CUSTOM SIZES AND
SHAPES CAN BE
MANUFACTURED**



COLORS:
BROWN
WHITE
BEIGE

H-234 BASE
NYLON
1000 PER CARTON



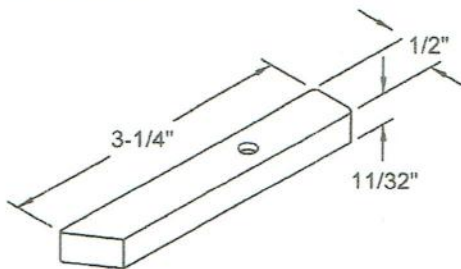
COLORS:
BROWN
WHITE
BEIGE

H-234 BASE
NYLON
1000 PER CARTON

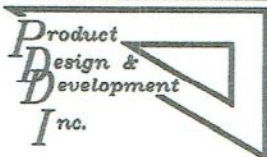
H-236 RIGHT HAND
H-237 LEFT HAND
NYLON
500 PER CARTON

**ALL TILT LATCHES
USE H-235 SPRINGS**

H-238 RIGHT HAND
H-239 LEFT HAND
NYLON
500 PER CARTON



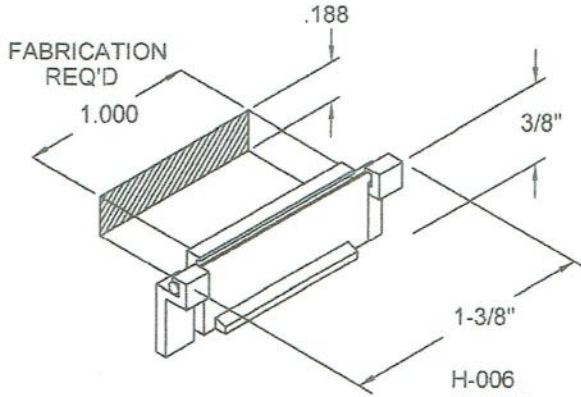
H-081R RIGHT HAND
H-081L LEFT HAND
NYLON
1000 PER CARTON



2603 KEYWAY DRIVE YORK, PENNSYLVANIA 17402 USA
PH: 717-741-4844 FAX: 717-741-4625 EMAIL: pddi@comcast.net
www.pddi.us

HARDWARE

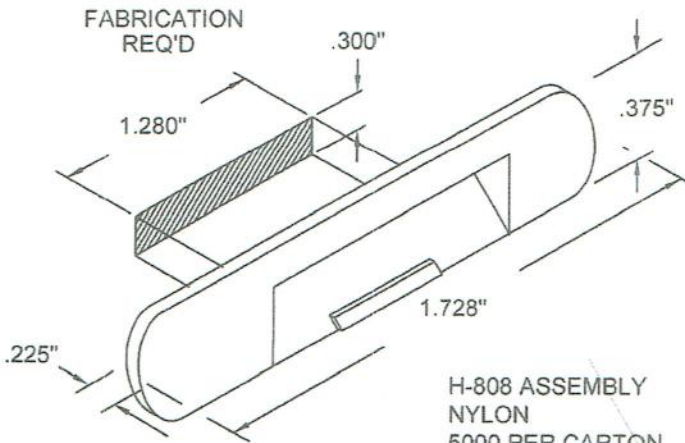
WEEPS



H-006
NYLON
5000 PER CARTON

PART NO.	EXTRUSION WALL THICKNESS (IN.)
H-006A	.047-.062
H-006B	.063-.078
H-006C	.079-.094
H-006D	.095-.125
H-006E	.230-.280
H-006G	.139-.156

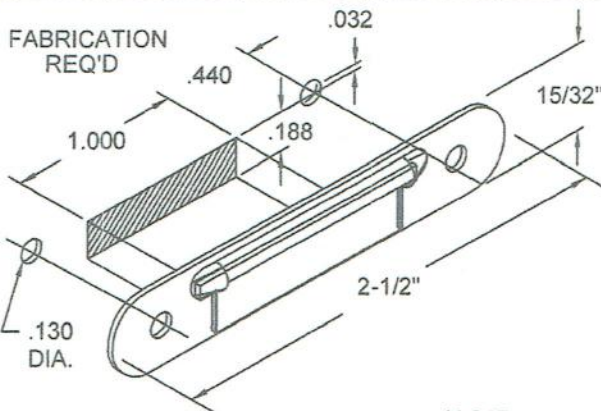
COLORS AVAILABLE:
WHITE, BLACK, BRONZE, DARK BROWN,
CHESTNUT, BEIGE, GRAY, SILVER GRAY,
SANDSTONE, EARTHTONE
ABLE TO CUSTOM MATCH COLORS
CALL FOR SAMPLES



H-808 ASSEMBLY
NYLON
5000 PER CARTON

ACCOMMODATES EXTRUSION WALL THICKNESS FROM .062 - .125

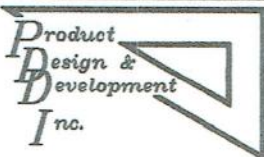
COLORS AVAILABLE:
WHITE, BLACK, BRONZE, DARK BROWN,
CHESTNUT, BEIGE, GRAY, SILVER GRAY,
SANDSTONE, EARTHTONE
ABLE TO CUSTOM MATCH COLORS
CALL FOR SAMPLES



H-047
STAMPED ALUMINUM
5000 PER CARTON

FASTENERS NOT INCLUDED

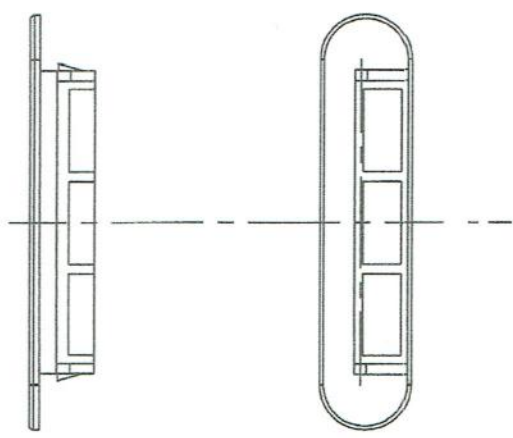
COLORS AVAILABLE:
WHITE, BRONZE, MILL FINISH



2603 KEYWAY DRIVE YORK, PENNSYLVANIA 17402 USA
PH: 717-741-4844 FAX: 717-741-4625 EMAIL: pddi@comcast.net
www.pddi.us



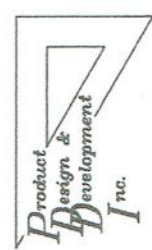
Fab. Size



1. Material: NYLON
2. Unspecified Walls:in.
3. Unspecified Radii:in.
4. Estimated Area:Sq.in.
5. Estimated Wt.:lb./ft.
6. Est. Perimeter:in.
7. Centroid:in.
8. Ixx =in.⁴
9. Iyy =in.⁴

Legend:

- Sxx =in.
- Sxx_y =in.
- Syy =in.
- Syy_x =in.
- Rx =in.
- Ry =in.



Phone No: 717-741-4844
 Fax No: 717-741-4625
 E-mail: pddi@blazenet.net

PDDI

Designed:	Date:
Checked By: CEB	Date: 4-28-03
Scale: 2:1	Rev:
Part Name:	WEEP COVER
Project Title:	
Project No: 1127-H-808	Series: